

**kränzle**

MADE IN GERMANY



# PRODUCT CATALOG

PRESSURE WASHERS | VACUUM CLEANERS | SWEEPERS



#### SALES AND SERVICE POINTS

In addition to first-class product quality, we also provide professional advice and offer a dedicated service, through our Kränzle partners worldwide.

#### GENERAL GUIDELINES

This product catalog is valid from 1st October 2025. All previous product catalogs are no longer valid. Technical changes and errors reserved. The general terms and conditions of **Josef Kränzle GmbH & Co. KG** apply.

**kränzle**

#### Josef Kränzle GmbH & Co. KG

Rudolf-Diesel-Straße 20  
89257 Illertissen (Germany)  
www.kraenzle.com

#### SALES

phone sales: +49 (0) 7303 96 05-250  
fax: +49 (0) 7303 96 05-670  
mail: sales@kraenzle.com



[youtube.com/kraenzleDE](https://www.youtube.com/kraenzleDE)



# TABLE OF CONTENTS


Kränzle product innovations .....	4-5
Kränzle in-line RP pump .....	6-7
Kränzle new products .....	8-11
Key industries .....	12-13
Digital Product Advisor .....	14-15
Quality in every detail.....	16-17

## COLD WATER PRESSURE WASHERS

### COLD WATER - COMPACT

HD-Series .....	20-23
K 1154-Series .....	24-25
X-Series .....	26-27
K 2000-Series .....	28-29
Profi-Series .....	30-31

### COLD WATER - POWERFUL

medium quadro-Series .....	34-35
large quadro-Series .....	36-37
Primus-Series .....	38-39
 Primus-RP-Series .....	40-41
 WS-RP-Series   WSC-RP-Series .....	42-45
 LX-RP-Series .....	46-47

### PRESSURE WASHERS WITH COMBUSTION ENGINE

Profi-Jet-Series .....	50-53
B-Series .....	54-55

## HOT WATER PRESSURE WASHERS


### HOT WATER - OIL HEATED

 therm-RP-Series .....	58-61
 therm-RP-Series - black edition .....	62-63
therm 1017-Series .....	64-65
therm-C-Series .....	66-67
therm-CA-Series .....	68-69

### PRESSURE WASHERS - ELECTRICALLY HEATED

 e-therm-Series .....	72-73
--	-------

## ACCESSORIES FOR PRESSURE WASHERS

 Accessories for plug-in system D12 - Complete .....	74-96
---	-------

## PRESSURE WASHERS FOR PRIVATE USERS

Quickly-Series .....	100-101
K 1050-Series .....	102-103
Accessories for plug-in system D10 .....	106

## VACUUM CLEANERS

Ventos L-Series .....	110-111
Accessories for Ventos L-Series .....	112-113
Ventos 12-Series .....	114-115
Accessories for Ventos 12-Series.....	115

## SWEEPERS

Colly 800 .....	118-119
Kränzle 1+1 .....	120-121

# BETTER PERFECT

# THAN CHEAP!

## OUR CORPORATE VALUES

### ■ QUALITY

"Our goal is to consistently meet or exceed clearly defined standards in all areas of the company in order to provide our customers with consistently high quality."

### ■ FLEXIBILITY

"We are not closed to the challenges of the market and our customers. This openness allows us to respond flexibly and early to new requirements and to meet them within the limits of our resources."

### ■ INNOVATION

"To stand still is to go backwards. Through our own research and development, we want to continuously offer users added value in terms of performance, safety, handling and cost-effectiveness."

### ■ ENVIRONMENTAL AWARENESS

"From production to product. Through modern production, well thought-out logistics and sophisticated, durable products, we contribute to a conscious approach to the environment."

# KRÄNZLE

## NEW PRODUCTS



### K 1154 TST

The popular K 1152 has a worthy successor: with an operating pressure of 140 bar and its robust design, the new Kränzle K 1154 sets new standards in performance and durability. Whether for demanding private users or daily use in the craft, the K 1154 masters every cleaning task with flying colours. Compact, mobile and equipped with all the proven Kränzle features, it is your reliable partner for thorough cleanliness. Discover the next generation now!

page 24-25



### Ventos 12

For professional cleaning in hotels, offices, retail outlets or building cleaning: discover the new Ventos 12-Series! With the commercial dry vacuum cleaners in the Ventos 12-Series, you decide what is more important to you: uncompromising power or maximum efficiency. The Ventos 12 impresses with a powerful 900 W motor for maximum suction power, while the Ventos 12 HE with a 650 W motor offers impressive performance with lower power consumption.

page 114-115



## Lance with pendulum nozzle

Discover our new pendulum nozzles in sizes 03 and 042. These complement our existing range (05, 07, 08 and 11). Thanks to the Coandă effect, the nozzle generates an oscillating spot jet that increases cleaning power. Pendulum nozzles work with a similar spray pattern to flat-jet nozzles, but offer a higher impact force that loosens and removes dirt in a single pass.

page 78-79



## Stainless steel table

The stainless steel table was specially designed for the WS/WSC-RP-Series and is characterised by its high stability and durability. A particularly practical feature is that no holes need to be drilled in the wall, making installation quick and easy. Thanks to its rustproof stainless steel, the table is ideal for use in wet areas.

page 90-91



## Optimised for greater flexibility: therm-RP, LX-RP, WS-RP und WSC-RP

We have optimised our therm-RP, LX-RP, WS-RP and WSC-RP-Series high-pressure cleaners in the RP-1000 and RP-1200 performance classes. Thanks to a reduction in motor power from 6.3 kW to 5.5 kW, these models can now be operated with a 16A plug. As 16A connections are much more common than 32A connections, you can now use these devices more flexibly. Best of all, despite the lower motor power, the operating pressure and water volume remain unchanged.

page 42-45 (WS-RP, WSC-RP), 46-47 (LX-RP), 58-61 (therm-RP)



## IN-LINE RP PUMPS

### MAXIMUM PERFORMANCE AND RELIABILITY FOR PROFESSIONAL USE – MADE IN GERMANY

When it comes to professional high-pressure cleaning in agriculture, logistics, industry and construction, reliability is paramount. Our crankshaft pumps are the answer to the most demanding requirements. Developed and manufactured in Illertissen, they combine over 50 years of experience, expertise and innovative strength.

Every component is the result of our uncompromising quality standards, from the selection of first-class materials to sophisticated technology. Our pumps not only guarantee maximum efficiency and durability, but also the reliability you expect from a genuine quality product 'Made in Germany'.



#### DURABLE:

The pump head made of special brass and the robust ceramic plungers are wear-resistant and guarantee an exceptionally long service life even under extreme conditions. The generous oil housing ensures optimum lubrication and heat dissipation, which further increases the efficiency and reliability of the pump.

#### POWERFUL:

With a flow rate of 1000–1600 l/min, a Kränzle in-line RP pump enables fast and effective cleaning. Professional users benefit from shorter working times and first-class cleaning results.

#### FLEXIBLE:

The integrated pressure regulation allows for continuous adjustment of the operating pressure and water volume. This gives you full control over the cleaning process and allows for optimal adaptation to any surface and degree of soiling.

#### ECONOMICAL:

Time is money – especially in professional applications. Our pump is designed so that all wear parts are quickly and easily accessible. This significantly minimises maintenance time and reduces ongoing operating costs by keeping downtime to a minimum.

### TECHNICAL SPECIFICATIONS:

MODEL		RP 1000	RP 1200	RP 1400	RP 1600
Operating pressure	bar   MPa	30-200   3-20	30-190   3-19	30-170   3-17	30-150   3-15
Water output	l/min   l/h	16.6   1000	20   1200	23.3   1400	26.7   1600
Admissible overpressure	bar   MPa	220   22	210   21	190   19	170   17
Motor speed	Rpm	1400	1400	1400	1400

### IN-LINE RP PUMPS ARE USED IN THE FOLLOWING SERIES:

- **WS-RP | WSC-RP** page 42-45
- **LX-RP** page 46-47
- **THERM-RP** page 58-61



# QUALITY HAS A NAME – AND MANY FACES



For more than 50 years, Kränzle has stood for quality "Made in Germany". To achieve this, we combine our expertise and have always manufactured our high-pressure cleaners at our Illertissen site. We rely exclusively on high-quality materials, sophisticated technology and years of know-how.

And our values have not changed in 50 years. We are proud to say that Kränzle has stood for the highest quality, flexibility, innovation and environmental responsibility since the company was founded.

Committed to these values, our entire team, from the engineers in research and development to our employees in production and our specialists in logistics, sales and service, work together every day to meet the diverse requirements of the cleaning industry worldwide with innovations of the highest quality.

Over the past 50 years, the commitment of each and every team member to make our corporate philosophy a reality has made Kränzle one of the world's quality leaders for cleaning machines.







# 50 YEARS

# OF SUSTAINABLE QUALITY



Kränzle can look back on a successful history that began long before the company was founded. It all began on the day in 1958 when company founder Josef Kränzle started his first job at the Wieland Werke in Vöhringen as a "Vesperholer" (He was responsible for lunch). After this probationary period, Kränzle began his apprenticeship as a lathe operator (today's cutting machine operator) and, after receiving his master's certificate, worked his way up to master craftsman before leaving the company in 1974.



During this time, as an apprentice, Josef Kränzle came into contact with the first steam cleaner, which was introduced into the company and subsequently improved by Oskar Ehrle. Josef Kränzle was responsible for the turned and milled parts, which allowed him to discover the secrets of the pump and combustion chamber functions at a very early stage and to develop his passion for this technology.

It is therefore not surprising that Josef Kränzle founded his first own company, Josef Kränzle Armaturenbau in Illertissen, on September 1, 1974, after leaving Wieland Werke. This was the beginning of a success story.

## MILESTONES:

### 1974 Foundation of Josef Kränzle Armaturenbau e.K.



In 1974, Josef Kränzle founded Kränzle Armaturenbau e.K. in his own garage with the aim of manufacturing high-quality high-pressure cleaners for the cleaning market. The idea for this was born during his time at Wieland. Here he saw the first steam cleaner in action and was involved in the development of spray guns.

### 1978 New production facility at Rudolf-Diesel-Strasse in Illertissen



Due to the high quality accessory products such as spray guns and lances, the company quickly outgrew the garage and a new production facility was considered shortly after the company was founded. In 1978, the company moved to Rudolf-Diesel-Strasse in Illertissen. At this time, Kränzle was not yet producing under its own name, but was manufacturing for established companies in the industry.

### 1981 Production of the first own high-pressure pump



Kränzle is now known in the industry as a specialist for cold and hot water high pressure cleaners and offers a wide range of accessories.

In the same year, Kränzle manufactures its first own high-pressure pump. This was an important step towards the company's own high-pressure cleaner.



1984

### Production of the first Kränzle mobile pressure washer and foundation of I. Kränzle GmbH



In 1984, the time had finally come. Kränzle produces the first mobile pressure washer and in the same year founds the sales company Ingrid Kränzle GmbH in Bielefeld. Two years later, the pressure washer was ready for series production. The first Kränzle high pressure cleaner is launched.

2001

### Expansion with a new production and logistics site in Illertissen



After many successful years, numerous patents and new products such as the Kränzle therm hot water high-pressure cleaner, Kränzle expands and increases its capacities with the new production and logistics site in Siemensstraße in Illertissen.

2010

### Change of name to Josef Kränzle GmbH & Co. KG and expansion of the management team



Kränzle Armaturenbau e.K. is renamed to Josef Kränzle GmbH & Co KG, as it is still known today. Ludwig Kränzle joins the management team and runs the company together with his father Josef Kränzle.

2013

### New sites in Poland and Switzerland



In the course of internationalization and in order to be able to implement the brand strategy even more efficiently, Kränzle expands its locations. Kränzle opens its first international subsidiaries in Poland (Warsaw) and Switzerland (Bremgarten).

2017

### Consolidation of production and sales at headquarters in Illertissen



In order to improve internal processes, efficiency and customer focus, the headquarters of Ingrid Kränzle GmbH will be relocated from Bielefeld to Illertissen in 2017. From now on, production and sales will be located at the same site.

2024

### 50th anniversary

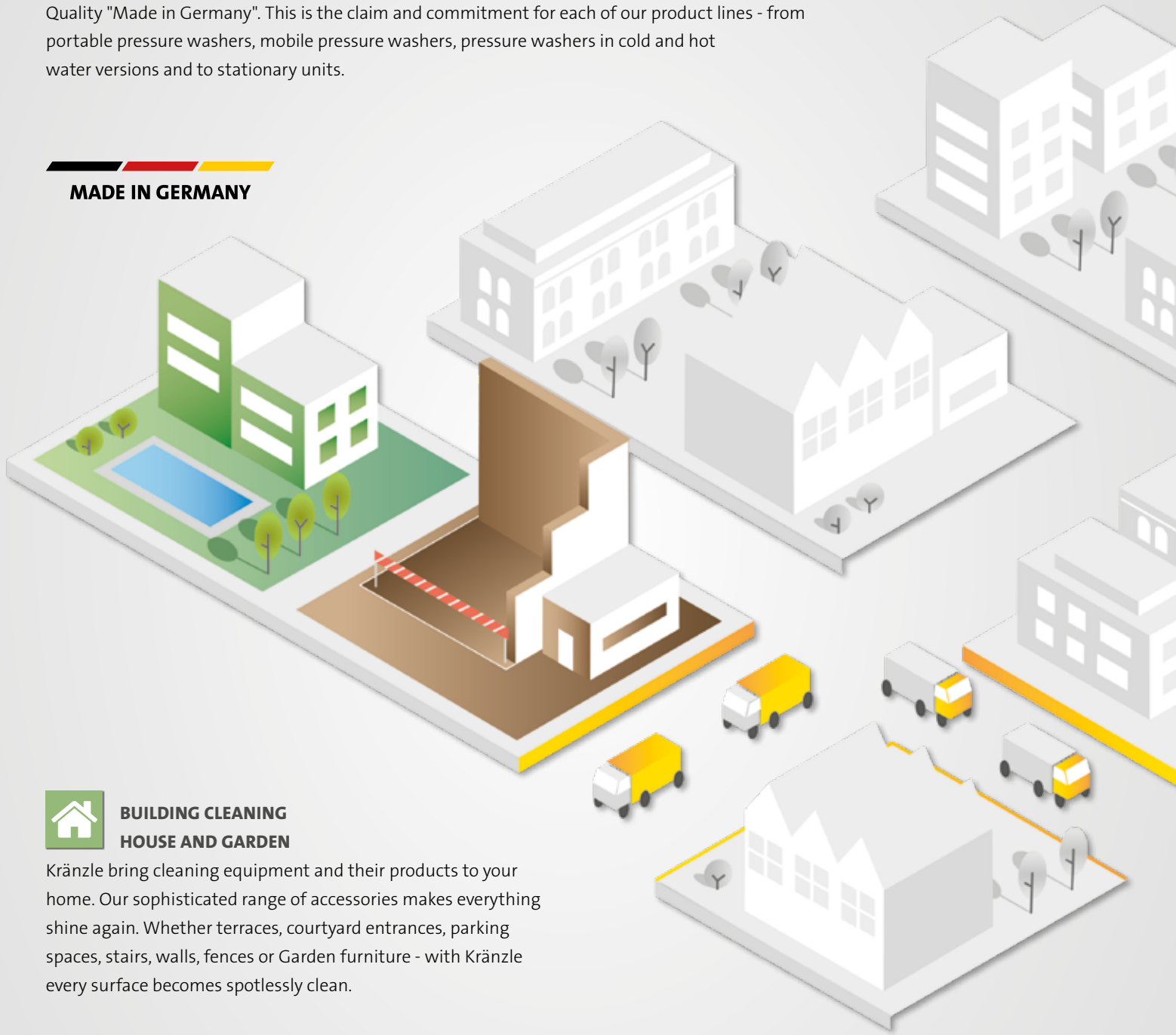


The success story of Josef Kränzle GmbH & Co. KG now spans more than 50 years. During this time, the company has grown from its beginnings in a garage to become an international industry leader. Innovative ideas as well as wise investments and decisions have set the course for further successful years.

# THE RIGHT KRÄNZLE FOR EVERY APPLICATION

The requirements for high-pressure cleaners, industrial hoovers and manual sweepers vary greatly from one industry to another. This is why Kränzle has developed a product range which, due to its breadth and depth, meets all requirements with ease.

Quality "Made in Germany". This is the claim and commitment for each of our product lines - from portable pressure washers, mobile pressure washers, pressure washers in cold and hot water versions and to stationary units.



## **BUILDING CLEANING HOUSE AND GARDEN**

Kränzle bring cleaning equipment and their products to your home. Our sophisticated range of accessories makes everything shine again. Whether terraces, courtyard entrances, parking spaces, stairs, walls, fences or Garden furniture - with Kränzle every surface becomes spotlessly clean.



## **CRAFT**

Craftspeople work in difficult and challenging conditions. Kränzle works continuously to develop and improve its products to meet these challenges.



## **AUTOMOTIVE INDUSTRY HAULAGE FIRMS**

Make your business shine! Whether your business is a car dealership, garage, valeting company, haulage or bus company, making a good first impression is important. Kränzle have an effective cleaning solution for whatever business requires.



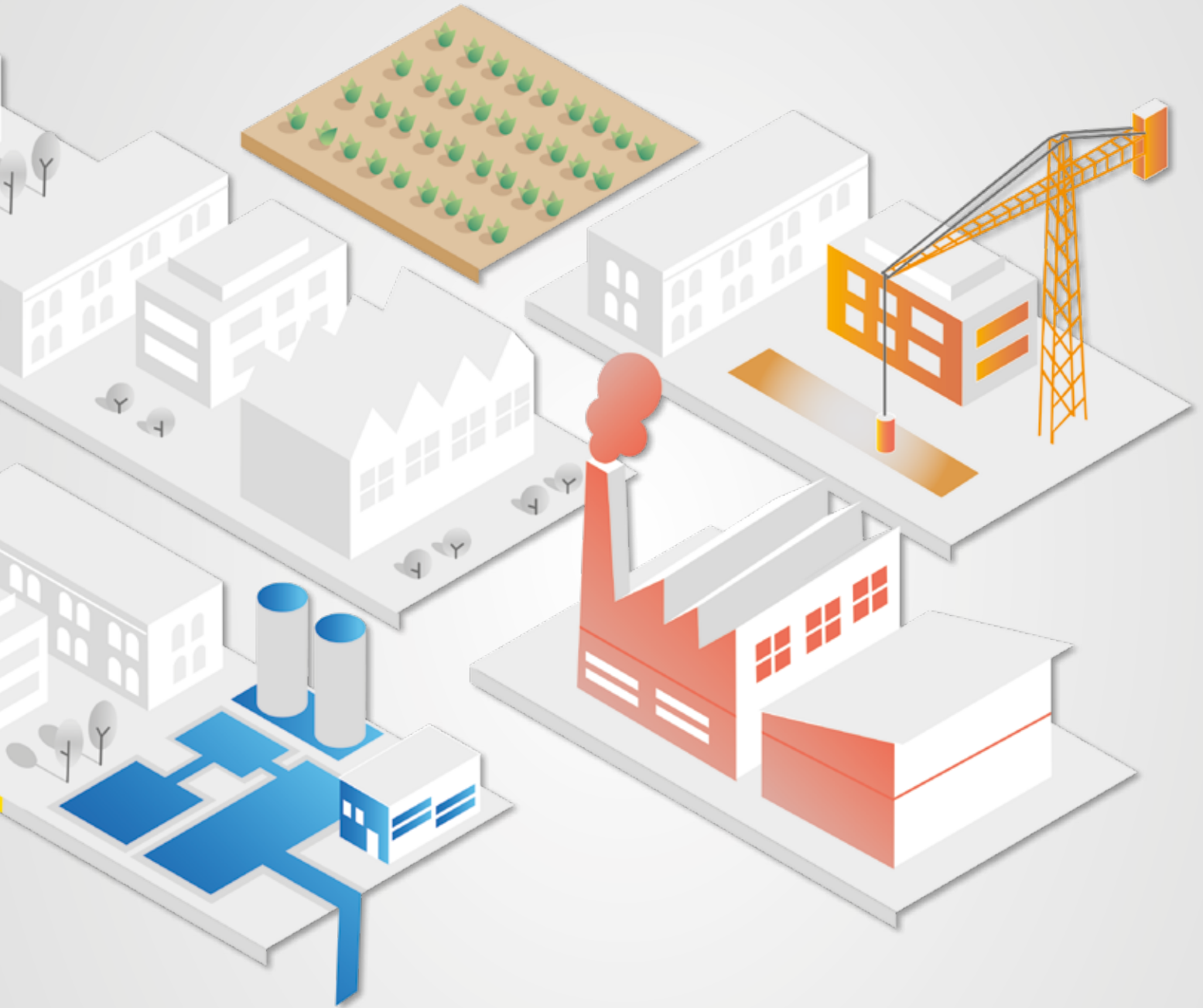
## AGRICULTURE LIVESTOCK FARMING

Cleanliness in agriculture and animal husbandry is a fundamental requirement for health, hygiene and good working conditions. Whether for the care of tractors and machines or for cleaning the stables and yards - a Kränzle pressure washer may be used.



## PUBLIC SERVICE CONSTRUCTION

The cleaning operations in the public service require professional non compromising equipment. Kränzle high-pressure cleaners give the solution for the cleaning of construction vehicles, vans, public places or the Removal of graffiti on facades.



## SANITARY FOOD

The Kränzle NoM versions (non-marking) are particularly suitable for use in hygiene and sanitary areas. White solid rubber tyres and grey high-pressure hoses leave no signs of abrasion, as required for these areas.



## INDUSTRY

Premises and machines must be regularly inspected and dust, dirt and oil contamination removed. Kränzle offers high-quality cleaning machines with sophisticated accessories, which meet all the requirements of industrial companies.



# WITH JUST A FEW CLICKS TO THE DESIRED PRODUCT

## DIGITAL PRODUCT SELECTOR

Which pressure washer is best suited to the task at hand is often not obvious at first glance. Kränzle's newly developed digital product selector helps to determine one's own requirements such as intended use, frequency of use or desired cleaning power. A few details and you quickly and easily receive a product recommendation tailored to your individual needs.



### WITH JUST A FEW CLICKS

Intuitive and self-explanatory menu navigation saves time during the search.

### AND QUESTIONS

Intended use, performance requirements and frequency of use determine product selection.

### TO THE PERFECT RESULT

The right device and all the important technical data.



**FIND YOUR DESIRED  
PRODUCT NOW**

Scan QR code

### ADVANTAGES PRODUCT SELECTOR

- can also be used on smartphone and tablet
- no app download necessary
- smart and free product recommendation
- individual needs analysis
- technical data and product information included



**READY FOR**

**TOP PERFORMANCE**

**AT ANY TIME**

**PRESSURE WASHERS - PROFESSIONAL**

QUALITY IN EVERY DETAIL

## YOU CAN RELY ON KRÄNZLE

When you choose the Kränzle brand, you always get well-engineered high-pressure cleaners that convince all along the line. At our production site in Illertissen, southern Germany, every pressure washer is checked by hand before it leaves the factory. In this way, we guarantee users the highest quality, superior cleaning power and a particularly long service life.

### THE KRÄNZLE PRODUCT ADVANTAGES

- high-quality materials and workmanship
- innovative design
- user-friendly handling
- environmentally conscious consumption
- extreme durability



### QUALITY "MADE IN GERMANY"

For us, quality already begins with product development, which is located at the Illertissen site. The production and quality control of almost all components also take place there.



### QUICK RELEASE PLUG-IN SYSTEM

Sophisticated, fast and reliable: the quick release plug-in system with hardened stainless steel components ensures simple and always safe connection of the safety shut-off gun with the lance.



### HEXAGONAL ANTI-ROTATION LOCK

Cleaning lances and accessories equipped with a hexagonal coupling can be locked against rotation in six different positions. This prevents the accessories from twisting unintentionally and allows them to be guided by moving the gun.



### PRESSURE REGULATION | STAINLESS STEEL PRESSURE GAUGE

With all high-pressure cleaners (except the K 1050-Series), the working pressure and water quantity can be individually adjusted to the respective application. The large stainless steel pressure gauge provides a clear reading of the set working pressure. It contains a glycerine liquid that dampens possible fluctuations of the pointer.



### SLOW RUNNING ELECTRIC MOTOR

Economical, quiet and durable: The particularly powerful high-pressure cleaners for continuous operation are equipped with a 4-pole electric motor. Its low speed of 1400 rpm reduces the starting current, thus ensuring less wear and noise.





### TOTALSTOP SYSTEM | SAFETY SHUTDOWN

Energy consumption is reduced, service life increased: when closing off the high pressure gun, the motor switches off automatically, relieves the high-pressure pump and drive and reduces the noise level. If the pressure washer is accidentally not switched off, after 20 minutes it automatically goes into the safety shutdown by deactivating it.



### HOSE REEL | TWIST-STOP SCREW CONNECTION

Models with hose reel allow for neat storage of the high-pressure hose. Prevents the high-pressure hose from twisting and tangling. Making operation much more user friendly.



### ROTO-MOULD CHASSIS

The practically indestructible plastic housing gives the pressure washer additional stability. Motor and pump are well protected in the frame, securely shielded from external influences. The robust chassis ensures easy transport and high stability.

### AXIAL PUMP | IN-LINE RP PUMP

The heart of every Kränzle pressure washer is the solid pump head made of forged special brass. Both tried and tested axial pump, which has been installed for decades, and the in-line RP pump introduced in 2018 for higher flushing performance, guarantee a long service life due to low-wear components.



### WATER TANK

Always on the safe side: A float regulates the water inflow and prevents damage to the pump due to a lack of water.



### DIRECT SUCTION WATER INLET


No water connection - no problem: high-pressure cleaners with a motor output of 1400 rpm offer the possibility of sucking water from separate containers or ponds due to the suction power of the high-pressure pumps.

# INDESTRUCTIBLE, MOBILE & FAST TO HAND

‘Can’t be done? Not with us!’ These cold water high-pressure cleaners impress with their versatility, long service life and practical mobility. Whether compact and portable (HD-Series) or space-saving with two wheels (K 1154-Series, X-Series, K 2000-Series, Profi-Series) – they inspire professionals and delight DIY enthusiasts in professional and semi-professional use. Kränzle provides a reliable, high-quality tool for every application.



## TABLE OF CONTENTS

HD-Series .....	20-23
K 1154-Series .....	24-25
X-Series .....	26-27
K 2000-Series .....	28-29
Profi-Series .....	30-31
 Accessories for plug-in system D12 .....	74-96

## KEY INDUSTRIES





## TECHNICAL HIGHLIGHTS



### QUICK RELEASE PLUG-IN SYSTEM

Sophisticated, fast and reliable: the quick release plug-in system with hardened stainless steel components ensures simple and always safe connection of the safety shut-off gun with the lance.



### TWIST-STOP SCREW CONNECTION

Go along with everything: provided with all machines: A special screw connection prevents the Twisting of the high-pressure hose during work and ensures so for consistent cleaning results in every situation.



### PRESSURE REGULATION

Working pressure and water flow can be fully adjusted to suit the in all all high-pressure cleaners (with the exception of the K 1050-Series and Quickly).



### TOTALSTOP SYSTEM

Energy consumption is reduced, service life is increased: when closing off the high pressure gun, the motor switches off automatically, relieves the high-pressure pump and drive and reduces the noise level.



### COMPACT DESIGN

The perfect combination of form and function: the unique housing design of the Kränzle devices facilitates transport, and saves space.



### OFF-ROAD CAPABILITY AND STABILITY

Goes over rough and smooth: the robust chassis makes it easier to transport and ensures high stability during use. Small Obstacles can be avoided thanks to the large wheels without any problems.



## HD-Series



**STAINLESS STEEL PRESSURE GAUGE**  
easy reading of the working pressure

**STAINLESS STEEL CARRY HANDLE**  
portable and space-saving compact design

**ELECTRIC MOTOR - 1400 RPM, 4-POLE**  
slower motor RPMs last longer, run quieter and allow for better in-let suction capabilities (HD 7/122 TS)




**TOTAL-STOP SYSTEM**  
automatic standby of the motor reduces noise and power consumption when not in use

HD 7/122 TS | 600030

► **ACCESSORIES** | page 74-96



 Quick release plug-in system D12

- Kränzle axial pump
- Total-Stop system
- Stepless pressure regulation
- Direct suction: Suction height HD 7/122 TS: 1.5 m
- High-pressure hose with Twist-Stop screw connection



MODEL	HD 7/122 TS	HD 10/122 TS
Ord.no.	600030	600080

#### TECHNICAL SPECIFICATIONS

Operating pressure	bar   MPa	30-120   3-12	30-120   3-12
Water output	l/min   l/h	7   420	10   600
Admissible overpressure	bar   MPa	135   13.5	135   13.5
Motor speed	Rpm	1400	2800
Connection	V   ~   Hz   A	230   1   50   7.5	230   1   50   11
Power intake   Power output	kW	1.6   1.0	2.5   1.8
Power supply cable	m	5	5
Plug		Schuko	Schuko
Dimensions L x W x H	mm	440   200   330	440   200   330
Weight	kg	23	23

#### EQUIPMENT

High-pressure hose	m   Ord.no.	10 (DN6)   43416	10 (DN6)   43416
Trigger gun with safety catch	Model   Ord.no.	Starlet 4   12525	Starlet 4   12525
Lance with flat jet nozzle	Nozzle   Ord.no.	● 028   12435-M20028	● 042   12435-M20042
Lance with Dirtkiller	Nozzle   Ord.no.	● 028   12438-028	● 042   12438-042



## HD-Series



HD 9/80 TS | 600130

► **ACCESSORIES** | page 74-96



### EQUIPMENT

- Quick release plug-in system D12
- Kränzle axial pump
- Total-Stop system
- Stepless pressure regulation
- Direct suction: Suction height HD 9/80 TS: 1.5 m | HD 12/130 TS: 2.5 m
- High-pressure hose with Twist-Stop screw connection





MODEL	HD 9/80 TS	HD 12/130 TS
Ord.no.	600130	600180

#### TECHNICAL SPECIFICATIONS

Operating pressure	bar   MPa	30-80   3-8	30-130   3-13
Water output	l/min   l/h	9   540	11   660
Admissible overpressure	bar   MPa	90   9	145   14.5
Motor speed	Rpm	1400	1400
Connection	V   ~   Hz   A	230   1   50   7.5	230   1   50   13.5
Power intake   Power output	kW	1.6   1.0	2.9   2.2
Power supply cable	m	5	5
Plug		Schuko	Schuko
Dimensions L x W x H	mm	470   230   320	500   240   320
Weight	kg	24	31

#### EQUIPMENT

High-pressure hose	m   Ord.no.	10 (DN6)   43416	10 (DN6)   43416
Trigger gun with safety catch	Model   Ord.no.	Starlet 4   12525	Starlet 4   12525
Lance with flat jet nozzle	Nozzle   Ord.no.	● 042   12435-M20042	● 042   12435-M20042
Lance with Dirtkiller	Nozzle   Ord.no.	● 042   12438-042	● 042   12438-042



# K 1154-Series



**NEW**

### CONVENIENT INTEGRATED HOSE REEL (TST)

space-saving storage of the high-pressure hose with twist stop screw connection

**NON-SLIP RUBBER GRIP**  
for a secure hold

**ROBUST CHASSIS**  
practically indestructible plastic housing

**STAINLESS STEEL PRESSURE GAUGE**  
easy reading of the working pressure

**OFF-ROAD CAPABILITY AND STABILITY**  
robust chassis for easy transport and high stability

### ACCESSORY STORAGE

neat storage for high pressure gun and lances



### WORKING POSITION




K 1154 TST | 602050

► **ACCESSORIES** | page 74-96



### EQUIPMENT

 Quick release plug-in system D12

- Kränzle axial pump
- Total-Stop system
- Stepless pressure regulation
- High-pressure hose with Twist-Stop screw connection



#### VARIANT - NON-MARKING

<b>NOM conversion kit</b>	Ord.no.	<b>42251</b>
---------------------------	---------	--------------

For further information on NON-Marking please refer to page 75

<b>MODEL</b>	<b>K 1154 TST</b>	<b>NEW</b>
<b>Ord.no.</b> <b>TST</b> incl. hose drum	<b>602050</b>	

#### TECHNICAL SPECIFICATIONS

Operating pressure	bar   MPa	30-140   3-14
Water output	l/min   l/h	10   600
Admissible overpressure	bar   MPa	160   16
Motor speed	Rpm	2800
Connection	V   ~   Hz   A	230   1   50   12.8
Power intake   Power output	kW	2.95   2.2
Power supply cable	m	5
Plug		Schuko
Dimensions L x W x H	mm	470   360   875
Weight	kg	33

#### EQUIPMENT

High-pressure hose	m   Ord.no.	15 (DN6)   48015
Trigger gun with safety catch	Model   Ord.no.	Starlet 4   12525
Lance with flat jet nozzle	Nozzle   Ord.no.	● 042   12435-M20042
Lance with Dirtkiller	Nozzle   Ord.no.	● 042   12438-042





## X-Series



### ACCESSORY BOX

integrated holder for practical storage of Kränzle foam lances

### CONVENIENT INTEGRATED HOSE REEL (TST)

space-saving storage of the high-pressure hose with twist stop screw connection

### STAINLESS STEEL PRESSURE GAUGE

easy reading of the working pressure

### OFF-ROAD CAPABILITY AND STABILITY

robust chassis for easy transport and high stability

### ACCESSORY STORAGE

neat storage for high pressure gun and lances

### ELECTRIC MOTOR - 1400 RPM, 4-POLE


slower motor RPMs last longer, run quieter and allow for better in-let suction capabilities (X 8/150 TST)

X 8/150 TST | 603600

► **ACCESSORIES** | page 74-96



### EQUIPMENT

-  Quick release plug-in system D12
- Kränzle axial pump
- Total-Stop system
- Stepless pressure regulation
- High-pressure hose with Twist-Stop screw connection



MODEL	X 8/150 TST	X 10/140 TST
Ord.no. <b>TST</b> incl. hose drum	<b>603600</b>	<b>603610</b>

#### TECHNICAL SPECIFICATIONS

Operating pressure	bar   MPa	30-150   3-15	30-140   3-14
Water output	l/min   l/h	8   480	10   600
Admissible overpressure	bar   MPa	170   17	160   16
Motor speed	Rpm	1400	2800
Connection	V   ~   Hz   A	230   1   50   9.8	230   1   50   12.8
Power intake   Power output	kW	2.25   1.7	2.95   2.2
Power supply cable	m	5	5
Plug		Schuko	Schuko
Dimensions L x W x H	mm	470   360   875	470   360   875
Weight	kg	33	33

#### EQUIPMENT

High-pressure hose	m   Ord.no.	15 (DN6)   498000	15 (DN6)   498000
Trigger gun with safety catch	Model   Ord.no.	Starlet 4   12525	Starlet 4   12525
Lance with flat jet nozzle	Nozzle   Ord.no.	○ 03   12435-M2003	● 042   12435-M20042
Lance with Dirtkiller	Nozzle   Ord.no.	○ 03   12438-03	● 042   12438-042



## K 2000-Series



**CONVENIENT INTEGRATED HOSE REEL (TST)**  
space-saving storage of the high-pressure hose with twist stop screw connection

**ROTO-MOULD CHASSIS**  
practically indestructible plastic housing

**STAINLESS STEEL PRESSURE GAUGE**  
easy reading of the working pressure


**ACCESSORY STORAGE**  
neat storage for high pressure gun and lances

**OFF-ROAD CAPABILITY AND STABILITY**  
robust chassis for easy transport and high stability

K 2160 TST | 604020

► **ACCESSORIES** | page 74-96

### EQUIPMENT

-  Quick release plug-in system D12
- Kränzle axial pump
- Total-Stop system
- Stepless pressure regulation
- Direct suction: Suction height 2.5 m
- High-pressure hose with Twist-Stop screw connection







#### VARIANT - NON-MARKING

<b>NOM conversion kit</b> Version without drum	Ord.no.	<b>42250</b>
<b>NOM conversion kit</b> Version with drum	Ord.no.	<b>42251</b>
<b>K 2160 TST NOM</b> ex works	Ord.no.	<b>604030</b>

For further information on NON-Marking please refer to page 75

MODEL	K 2160 TS K 2160 TST	K 2195 TS K 2195 TST	K 2175 TS K 2175 TST
<b>Ord.no. TS</b> without hose drum	<b>604010</b>	<b>604050</b>	<b>604110</b>
<b>Ord.no. TST</b> incl. hose drum	<b>604020</b>	<b>604060</b>	<b>604120</b>

#### TECHNICAL SPECIFICATIONS

Operating pressure	bar   MPa	30-140   3-14	30-170   3-17	30-160   3-16
Water output	l/min   l/h	11   660	8   480	12   720
Admissible overpressure	bar   MPa	160   16	195   19.5	175   17.5
Motor speed	Rpm	1400	1400	1400
Connection	V   ~   Hz   A	230   1   50   14	230   1   50   14	400   3   50   6.7
Power intake   Power output	kW	3.2   2.4	3.2   2.4	3.3   2.6
Power supply cable	m	5	5	5
Plug		Schuko	Schuko	CEE 16 A
Dimensions L x W x H	mm	375   360   900	375   360   900	375   360   900
Weight without   incl. hose drum	kg	39   40	39   40	39   40

#### EQUIPMENT

High-pressure hose <b>TS</b> without hose drum	m   Ord.no.	10 (DN6)   43416	10 (DN6)   43416	10 (DN6)   43416
High-pressure hose <b>TST</b> incl. hose drum	m   Ord.no.	15 (DN6)   48015	15 (DN6)   48015	15 (DN6)   48015
Trigger gun with safety catch	Model   Ord.no.	Starlet 4   12525	Starlet 4   12525	Starlet 4   12525
Lance with Vario-Jet Duo	Nozzle   Ord.no.	● 042   12433-042	○ 03   12433-03	● 042   12433-042
Lance with Dirtkiller	Nozzle   Ord.no.	● 042   12438-042	○ 03   12438-03	● 042   12438-042



## Profi-Series



### ROTO-MOULD CHASSIS

practically indestructible plastic housing

### CONVENIENT INTEGRATED HOSE REEL (TST)

space-saving storage of the high-pressure hose with twist stop screw connection

### ELECTRIC MOTOR - 1400 RPM, 4-POLE

slower motor RPMs last longer, run quieter and allow for better in-let suction capabilities

### STAINLESS STEEL PRESSURE GAUGE

easy reading of the working pressure

### ACCESSORY STORAGE

neat storage for high pressure gun and lances

### OFF-ROAD CAPABILITY AND STABILITY

robust chassis for easy transport and high stability




Profi 160 TST | 606000

► **ACCESSORIES** | page 74-96



### EQUIPMENT

 Quick release plug-in system D12

■ Kränzle axial pump

■ Total-Stop system

■ Stepless pressure regulation

■ Optional: Internal Water Tank can be supplied upon request

■ Direct suction: Suction height 2.5 m

■ High-pressure hose with Twist-Stop screw connection



#### VARIANT - NON-MARKING

<b>NOM conversion kit</b>	Ord.no.	<b>42260</b>
---------------------------	---------	--------------

For further information on NON-Marking please refer to page 75

MODEL	Profi 160 TST	Profi 195 TST	Profi 175 TST
<b>Ord.no. TST</b> incl. hose drum	<b>606000</b>	<b>606010</b>	<b>606100</b>

#### TECHNICAL SPECIFICATIONS

Operating pressure	bar   MPa	30-140   3-14	30-170   3-17	30-150   3-15
Water output	l/min   l/h	11   660	8   480	12   720
Admissible overpressure	bar   MPa	160   16	195   19.5	175   17.5
Motor speed	Rpm	1400	1400	1400
Connection	V   ~   Hz   A	230   1   50   14.3	230   1   50   14.3	400   3   50   7.2
Power intake   Power output	kW	3.2   2.5	3.2   2.5	3.8   3.0
Power supply cable	m	5	5	5
Plug		Schuko	Schuko	CEE 16 A
Dimensions L x W x H	mm	355   375   980	355   375   980	355   375   980
Weight	kg	45	45	45

#### EQUIPMENT

High-pressure hose	m   Ord.no.	15 (DN6)   43829	15 (DN6)   43829	15 (DN6)   43829
Trigger gun with safety catch	Model   Ord.no.	Starlet 4   12525	Starlet 4   12525	Starlet 4   12525
Lance with flat-jet nozzle	Nozzle   Ord.no.	● 042   12435-M20042	○ 03   12435-M2003	● 042   12435-M20042
Lance with Dirtkiller	Nozzle   Ord.no.	● 042   12438-042	○ 03   12438-03	● 042   12438-042



#### Water tank

#### EXPERT TIP

- Prevents damage to the high-pressure pump in case of water shortage
- Volume 1.3 liters
  - Simple, tool-free assembly

<b>Ord.no.</b>	<b>43860</b>
----------------	--------------



COLD WATER PRESSURE WASHERS - ESPECIALLY POWERFUL DEVICES

# SOVEREIGN HIGH-PERFORMANCE MACHINES WITH INNOVATIVE TECHNOLOGY



They take on any challenge: In agriculture or animal husbandry, on the construction site or in industry: with up to 250 bar working pressure, these professional machines get to work powerfully everywhere, even in continuous use. In daily use, they quickly prove to be indispensable tools.

### **RP Pressure washers with in-line RP pump:**

To achieve perfect cleanliness, a particularly high flushing effect is often required. The Kränzle high-pressure cleaners with innovative in-line RP pump achieve a water output of up to 1600 l/h and meet even the highest demands efficiently and effortlessly. Even the most stubborn dirt is removed in no time at all.

## TABLE OF CONTENTS

medium quadro-Series .....	34-35
large quadro-Series .....	36-37
Primus-Series .....	38-39
<b>RP</b> Primus-RP-Series .....	40-41
<b>RP</b> WS-RP-Series   WSC-RP-Series .....	42-45
<b>RP</b> LX-RP-Series .....	46-47
<b>RP</b> Accessories for plug-in system D12 .....	74-96

## KEY INDUSTRIES



## TECHNICAL HIGHLIGHTS



### QUICK RELEASE PLUG-IN SYSTEM

Sophisticated, fast and reliable: the quick release plug-in system with hardened stainless steel components ensures simple and always safe connection of the safety shut-off gun with the lance.



### OFF-ROAD CAPABILITY AND STABILITY

Goes over rough and smooth: the robust chassis makes it easier to transport and ensures high stability during use. Small Obstacles can be avoided thanks to the large wheels without any problems.



### INTEGRATED HOSE REEL

Space-saving and convenient: with a folding crank handle for practical, neat storage of the high-pressure hose. A special locking device holds the reel in the desired position.



### WATER TANK

Always on the safe side: A float regulates the water inflow and prevents damage to the pump due to a lack of water.



### INNOVATIVE IN-LINE RP PUMP

Proven technology convincingly enhanced: a Crankshaft moves the plungers in line via connecting rods the in-line pump. This special design enables even greater water flow with significantly higher washing effect than conventional pumps and ensures impressive properties:

- Power transmission as with a car engine via stable crankshaft, connecting rod and plunger
- extremely long service life
- integrated unloader valve
- Total-stop system with delayed engine shutdown

# medium quadro-Series



**CONVENIENT INTEGRATED HOSE REEL (TST)**  
space-saving storage of the high-pressure hose with twist stop screw connection

**ACCESSORY STORAGE**  
neat storage for high pressure gun and lances

**STAINLESS STEEL PRESSURE GAUGE**  
easy reading of the working pressure

**IMPACT PROTECTION**  
reduces accidental damage to the high-pressure pump

**WATER TANK**  
helps prevent damage to the device in case of water shortage

**ROTO-MOULD CHASSIS**  
practically indestructible plastic housing

quadro 899 TST | 610120

► **ACCESSORIES** | page 74-96

## EQUIPMENT

- Quick release plug-in system D12
- Kränzle axial pump
- Total-stop system with delayed motor cut-off
- Safety shutdown
- Stepless pressure regulation

- High-pressure hose with Twist-Stop screw connection
- Cleaning Agent Intake
- Locking brake
- Water tank: Volume 10 liters







#### VARIANT - NON-MARKING

<b>NOM conversion kit</b>	Ord.no.	<b>42272</b>
<b>NOM conversion kit</b> quadro 899 TST	Ord.no.	<b>42271</b>
<b>quadro 799 TST NOM</b> ex works	Ord.no.	<b>61010</b>

For further information on NON-Marking please refer to page 75

MODEL	quadro 599 TST	quadro 799 TST	quadro 899 TST
<b>Ord.no. TST</b> incl. hose drum	<b>610000</b>	<b>610100</b>	<b>610120</b>

#### TECHNICAL SPECIFICATIONS

Operating pressure	bar   MPa	30-150   3-15	30-180   3-18	30-150   3-15
Water output	l/min   l/h	10   600	13   780	15   900
Admissible overpressure	bar   MPa	165   16.5	200   20	170   17
Motor speed	Rpm	1400	1400	1400
Connection	V   ~   Hz   A	230   1   50   14	400   3   50   8.5	400   3   50   8.5
Power intake   Power output	kW	3.3   2.4	5.5   4.0	5.5   4.0
Power supply cable	m	5	7.5	7.5
Plug		Schuko	CEE 16 A	CEE 16 A
Dimensions L x W x H	mm	780   395   870	780   395   870	780   395   870
Weight	kg	63	63	63

#### EQUIPMENT

High-pressure hose	m   Ord.no.	20 (DN6)   434161	20 (DN6)   434161	15 (DN8)   44879
Trigger gun with safety catch	Model   Ord.no.	Starlet 3   12500	Starlet 3   12500	Starlet 3   12500
Lance with flat-jet nozzle	Nozzle   Ord.no.	● 035   12420-D25035	● 045   12420-D25045	● 06   12420-D2506
Lance with Dirtkiller	Nozzle   Ord.no.	● 035   12425-035	● 045   12425-045	● 06   12425-06



# large quadro-Series



**CONVENIENT INTEGRATED HOSE REEL (TST)**  
space-saving storage of the high-pressure hose  
with twist stop screw connection

**ACCESSORY STORAGE**  
neat storage for high pressure  
gun and lances

**STAINLESS STEEL PRESSURE GAUGE**  
easy reading of the working pressure

**WATER TANK**  
helps prevent damage to the  
device in case of water shortage

**STAINLESS STEEL CHASSIS**  
durable and corrosion  
resistant

**IMPACT PROTECTION**  
reduces accidental damage to  
the high-pressure pump

quadro 1200 TST | 612120

► **ACCESSORIES** | page 74-96



## EQUIPMENT

Quick release plug-in system D12

- Kränzle axial pump
- Total-stop system with delayed motor cut-off
- Safety shutdown
- Stepless pressure regulation

- High-pressure hose with Twist-Stop screw connection
- Cleaning Agent Intake
- Stainless steel undercarriage
- Locking brake
- Water tank: Volume 12 liters



**VARIANT - NON-MARKING**

42280

<b>NOM conversion kit</b> Version without drum	Ord.no.	<b>42280</b>
<b>NOM conversion kit</b> Version with drum	Ord.no.	<b>42282</b>
<b>quadro 1200 TST NOM</b> ex works	Ord.no.	<b>612130</b>

For further information on NON-Marking please refer to page 75

MODEL	quadro 800 TST	quadro 1000 TS quadro 1000 TST	quadro 1200 TS quadro 1200 TST
<b>Ord.no. TS</b> without hose drum	–	<b>612080</b>	<b>612110</b>
<b>Ord.no. TST</b> incl. hose drum	<b>612060</b>	<b>612090</b>	<b>612120</b>

**TECHNICAL SPECIFICATIONS**

Operating pressure	bar   MPa	30-250   3-25	30-220   3-22	30-180   3-18
Water output	l/min   l/h	13.3   800	16   960	19   1140
Admissible overpressure	bar   MPa	270   27	250   25	200   20
Motor speed	Rpm	1400	1400	1400
Connection	V   ~   Hz   A	400   3   50   12	400   3   50   12	400   3   50   12
Power intake   Power output	kW	7.5   5.5	7.5   5.5	7.5   5.5
Power supply cable	m	7.5	7.5	7.5
Plug		CEE 16 A	CEE 16 A	CEE 16 A
Dimensions L x W x H	mm	770   570   990	770   570   990	770   570   990
Weight without   incl. hose drum	kg	–   89	83   89	83   89

**EQUIPMENT**

High-pressure hose <b>TS</b> without hose drum	m   Ord.no.	–	10 (DN8)   41081	10 (DN8)   41081
High-pressure hose <b>TST</b> incl. hose drum	m   Ord.no.	20 (DN8)   41083	20 (DN8)   41083	20 (DN8)   41083
Trigger gun with safety catch	Model   Ord.no.	Starlet 3   12500	Starlet 3   12500	Starlet 3   12500
Lance with flat-jet nozzle	Nozzle   Ord.no.	● 04   12420-D2504	● 05   12420-D2505	● 07   12420-D2507
Lance with Turbokiller (**for TST series only)	Nozzle   Ord.no.	● 04   12430-04 **	● 05   12430-05 **	● 07   12430-07 **





## Primus-Series



### ACCESSORY STORAGE

neat storage for high pressure gun and lances

### CONVENIENT INTEGRATED HOSE REEL (TST)

space-saving storage of the high-pressure hose with twist stop screw connection

### ROLL-ON AND ROLL-OFF AID

Enables effortless rolling up and unrolling of the high-pressure hose

### STAINLESS STEEL PRESSURE GAUGE

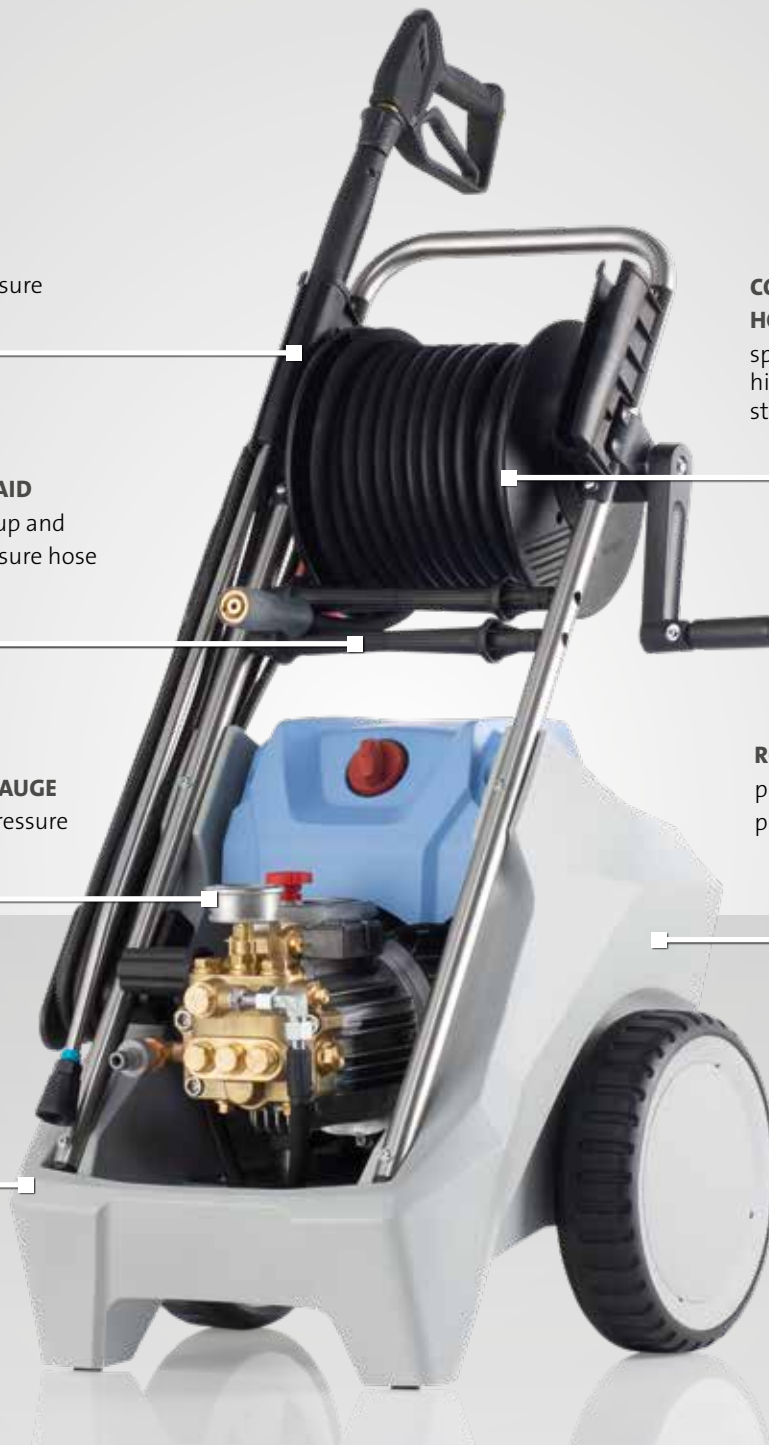
easy reading of the working pressure

### ROTO-MOULD CHASSIS

practically indestructible plastic housing

### IMPACT PROTECTION

reduces accidental damage to the high-pressure pump



Primus 1000 TST | 614150

► **ACCESSORIES** | page 74-96

### EQUIPMENT

- Quick release plug-in system D12
- Kränzle axial pump
- Total-stop system with delayed motor cut-off
- Safety shutdown
- Stepless pressure regulation
- High-pressure hose with Twist-Stop screw connection





**AUTOMATIC HOSE REEL**  
 automatic hose retraction with  
 Twist-Stop screw connection  
 (Primus 1000 TS AT + Primus 1200 TS AT)



**VARIANT - NON-MARKING**

<b>NOM conversion kit</b>	Ord.no.	<b>42284</b>
---------------------------	---------	--------------

For further information on NON-Marking please refer to page 75

MODEL	Primus 1000 TST	Primus 1000 TS AT	Primus 1200 TST	Primus 1200 TS AT
<b>Ord.no. TST</b> incl. hose drum	<b>614150</b>	–	<b>614160</b>	–
<b>Ord.no. TST</b> incl. automatic hose reel	–	<b>614155</b>	–	<b>614165</b>

**TECHNICAL SPECIFICATIONS**

Operating pressure	bar   MPa	30-220   3-22	30-220   3-22	30-180   3-18	30-180   3-18
Water output	l/min   l/h	16.6   1000	16.6   1000	20   1200	20   1200
Admissible overpressure	bar   MPa	250   25	250   25	200   20	200   20
Motor speed	Rpm	1400	1400	1400	1400
Connection	V   ~   Hz   A	400   3   50   11.4	400   3   50   11.4	400   3   50   11.4	400   3   50   11.4
Power intake   Power output	kW	7.5   5.5	7.5   5.5	7.5   5.5	7.5   5.5
Power supply cable	m	7.5	7.5	7.5	7.5
Plug		CEE 16 A	CEE 16 A	CEE 16 A	CEE 16 A
Dimensions L x W x H	mm	640   515   985	640   515   1100	640   515   985	640   515   1100
Weight	kg	75	88	75	88

**EQUIPMENT**

High-pressure hose	m   Ord.no.	20 (DN8)   443812	20 (DN8)   410832	20 (DN8)   443812	20 (DN8)   410832
Trigger gun with safety catch	Model   Ord.no.	Starlet 3   12500	Starlet 3   12500	Starlet 3   12500	Starlet 3   12500
Lance with flat-jet nozzle	Nozzle   Ord.no.	● 05   12420-D2505	● 05   12420-D2505	● 07   12420-D2507	● 07   12420-D2507



# Primus-RP-Series



**NEW**

### ACCESSORY STORAGE

neat storage for high pressure gun and lances

### CONVENIENT INTEGRATED HOSE REEL (TST)

space-saving storage of the high-pressure hose with twist stop screw connection

### ROLL-ON AND ROLL-OFF AID

Enables effortless rolling up and unrolling of the high-pressure hose

### ROTO-MOULD CHASSIS

practically indestructible plastic housing

### STAINLESS STEEL PRESSURE GAUGE

easy reading of the working pressure

### IMPACT PROTECTION



reduces accidental damage to the high-pressure pump



Primus-RP 900 TST | 614140

► **ACCESSORIES** | page 74-96

### EQUIPMENT

-  Quick release plug-in system D12
-  Kränzle in-line RP pump
  - Total-stop system with delayed motor cut-off
  - Safety shutdown
  - Stepless pressure regulation
  - High-pressure hose with Twist-Stop screw connection







<b>MODEL</b>	<b>Primus-RP 900 TST</b>	<b>NEW</b>
<b>Ord.no. TST</b> incl. hose drum	<b>614140</b>	

### TECHNICAL SPECIFICATIONS

Operating pressure	bar   MPa	30-170   3-17
Water output	l/min   l/h	15   900
Admissible overpressure	bar   MPa	190   19
Motor speed	Rpm	1400
Connection	V   ~   Hz   A	400   3   50   9.4
Power intake   Power output	kW	5.5   4.0
Power supply cable	m	7.5
Plug		CEE 16 A
Dimensions L x W x H	mm	600   465   995
Weight	kg	59

### EQUIPMENT

High-pressure hose	m   Ord.no.	20 (DN8)   443812
Trigger gun with safety catch	Model   Ord.no.	Starlet 3   12500
Lance with flat-jet nozzle	Nozzle   Ord.no.	● 055   12420-D25055



# WS-RP-Series | WSC-RP-Series



**WALL MOUNTABLE**  
for secure fixing to the wall

**STAINLESS STEEL PRESSURE GAUGE**  
easy reading of the working pressure

**ACCESSORY STORAGE**  
neat storage for high pressure gun and lances

**STAINLESS STEEL PROTECTIVE COVER (WSC-RP)**  
protects against external contamination, durable and corrosion resistant


**RP IN-LINE PUMP**  
for magnificent cleaning results with maximum water flow


WS-RP 1200 TS | 622120  
WSC-RP 1200 TS | 622130

► **ACCESSORIES** | page 74-96



## EQUIPMENT

 Quick release plug-in system D12

 Kränzle in-line RP pump

■ Standing device and wall unit

■ Total-stop system with delayed motor cut-off

■ Safety shutdown

■ Stepless pressure regulation

■ Stainless-steel housing (WSC-RP)

■ High-pressure hose with Twist-Stop screw connection



#### Conversion kit - flow monitor

For leakage protection in the pipe network.  
Suitable for non-monitored areas.

<b>Ord.no.</b>	<b>126342</b>	
Flow rate	l/min	4

MODEL	WS-RP 1000 TS WSC-RP 1000 TS	WS-RP 1200 TS WSC-RP 1200 TS	WS-RP 1400 TS WSC-RP 1400 TS	WS-RP 1600 TS WSC-RP 1600 TS
<b>Ord.no.</b> <b>WS</b> without cover	<b>622102</b>	<b>622122</b>	<b>622140</b>	<b>622160</b>
<b>Ord.no.</b> <b>WSC</b> with cover	<b>622112</b>	<b>622132</b>	<b>622150</b>	<b>622170</b>

#### TECHNICAL SPECIFICATIONS

Operating pressure	bar   MPa	30-200   3-20	30-190   3-19	30-170   3-17	30-150   3-15
Water output	l/min   l/h	16.6   1000	20   1200	23.3   1400	26.7   1600
Admissible overpressure	bar   MPa	220   22	210   21	200   20	170   17
Motor speed	Rpm	1400	1400	1400	1400
Connection	V   ~   Hz   A	400   3   50   13.5	400   3   50   14.3	400   3   50   14.3	400   3   50   14.3
Power intake   Power output	kW	7.5   5.5	7.5   5.5	8.0   6.3	8.0   6.3
Power supply cable	m	7.5	7.5	7.5	7.5
Plug		<b>NEW</b> CEE 16 A	<b>NEW</b> CEE 16 A	CEE 32 A	CEE 32 A
Dimensions L x W x H	mm	670   430   510	670   430   510	670   430   510	670   430   510
Weight without   with cover	kg	62   65	62   65	62   65	62   65

#### EQUIPMENT

High-pressure hose	m   Ord.no.	10 (DN8)   41081	10 (DN8)   41081	10 (DN8)   41081	10 (DN8)   41081
Trigger gun with safety catch	Model   Ord.no.	Starlet 3   12500	Starlet 3   12500	Starlet 3   12500	Starlet 3   12500
Lance with flat-jet nozzle	Nozzle   Ord.no.	05   12420-D2505	065   12420-D25065	08   12420-D2508	11   12420-D2511

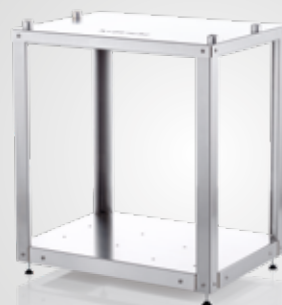


Wall holder-WS/WSC

**EXPERT TIP**

**Ord.no.** **483006**

#### NEW EXPERT TIP



#### STAINLESS STEEL TABLE

The stainless steel table was specially developed for our WS/WSC-RP devices. It offers high stability, comfort and flexibility without the need for time-consuming drilling into the wall.

**Ord.no.:** 16206

More information on page 90-91



# WS-RP-Series | WSC-RP-Series



**STAINLESS STEEL PRESSURE GAUGE**  
easy reading of the working pressure

**WALL MOUNTABLE**  
for secure fixing to the wall

**ACCESSORY STORAGE**  
neat storage for high pressure gun and lances

**STAINLESS STEEL PROTECTIVE COVER (WSC-RP)**  
protects against external contamination, durable and corrosion resistant

**RP IN-LINE PUMP**  
for magnificent cleaning results with maximum water flow

WS-RP 780 TS | 622060  
WSC-RP 780 TS | 622070

► **ACCESSORIES** | page 74-96



## EQUIPMENT

Quick release plug-in system D12

Kränzle in-line RP pump

■ Standing device and wall unit

■ Total-stop system with delayed motor cut-off

■ Safety shutdown

■ Stepless pressure regulation

■ Stainless-steel housing (WSC-RP)

■ High-pressure hose with Twist-Stop screw connection



#### Conversion kit - flow monitor

For leakage protection in the pipe network.  
Suitable for non-monitored areas.

<b>Ord.no.</b>		<b>126342</b>
Flow rate	l/min	4

MODEL	WS-RP 780 TS WSC-RP 780 TS	WS-RP 900 TS WSC-RP 900 TS
<b>Ord.no. WS</b> without cover	<b>622060</b>	<b>622080</b>
<b>Ord.no. WSC</b> with cover	<b>622070</b>	<b>622090</b>

#### TECHNICAL SPECIFICATIONS

Operating pressure	bar   MPa	30-150   3-15	30-180   3-18
Water output	l/min   l/h	13   780	15   900
Admissible overpressure	bar   MPa	170   17	200   20
Motor speed	Rpm	1400	1400
Connection	V   ~   Hz   A	400   3   50   8.0	400   3   50   9.4
Power intake   Power output	kW	5.5   4.0	5.5   4.0
Power supply cable	m	7.5	7.5
Plug		CEE 16 A	CEE 16 A
Dimensions L x W x H	mm	670   430   510	670   430   510
Weight without   with cover	kg	52   55	52   55

#### EQUIPMENT

High-pressure hose	m   Ord.no.	10 (DN8)   41081	10 (DN8)   41081
Trigger gun with safety catch	Model   Ord.no.	Starlet 3   12500	Starlet 3   12500
Lance with flat-jet nozzle	Nozzle   Ord.no.	● 05   12420-D2505	● 05   12420-D2505

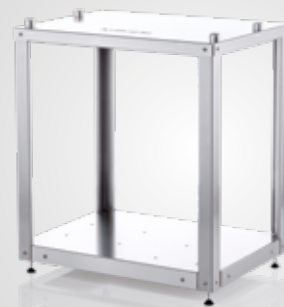


Wall holder-WS/WSC

EXPERT TIP

**Ord.no.** 483006

#### NEW EXPERT TIP



More information on page 90-91

#### STAINLESS STEEL TABLE

The stainless steel table was specially developed for our WS/WSC-RP devices. It offers high stability, comfort and flexibility without the need for time-consuming drilling into the wall.

**Ord.no.:** 16206

## LX-RP-Series



**CONVENIENT INTEGRATED HOSE REEL**  
space-saving storage of the high-pressure hose  
with twist stop screw connection

**ACCESSORY STORAGE**  
neat storage for high  
pressure gun and lances

**STAINLESS STEEL PROTECTIVE COVER**  
durable and corrosion resistant

**STAINLESS STEEL PRESSURE GAUGE**  
easy reading of the working pressure

**IMPACT PROTECTION**  
reduces accidental damage  
to the high-pressure pump

**RP IN-LINE PUMP**  
for magnificent cleaning results  
with maximum water flow

LX-RP 1600 TST | 616080

► **ACCESSORIES** | page 74-96



### EQUIPMENT

Quick release plug-in system D12

Kränzle in-line RP pump

■ Total-stop system with delayed motor cut-off

■ Safety shutdown

■ Stepless pressure regulation

■ High-pressure hose with Twist-Stop screw connection

■ Locking brake

■ Direct suction: Suction height 2.5 m







#### VARIANT - NON-MARKING

**NOM conversion kit** Ord.no. **42283**





For further information on NON-Marking please refer to page 75

MODEL	LX-RP 1000 TST	LX-RP 1200 TST	LX-RP 1400 TST	LX-RP 1600 TST
Ord.no. <b>TST</b> incl. hose drum	<b>616052</b>	<b>616062</b>	<b>616070</b>	<b>616080</b>

#### TECHNICAL SPECIFICATIONS

Operating pressure	bar   MPa	30-200   3-20	30-190   3-19	30-170   3-17	30-150   3-15
Water output	l/min   l/h	16.6   1000	20   1200	23.3   1400	26.7   1600
Admissible overpressure	bar   MPa	220   22	210   21	190   19	170   17
Motor speed	Rpm	1400	1400	1400	1400
Connection	V   ~   Hz   A	400   3   50   13.5	400   3   50   14.3	400   3   50   14.3	400   3   50   14.3
Power intake   Power output	kW	7.5   5.5	7.5   5.5	8.0   6.3	8.0   6.3
Power supply cable	m	7.5	7.5	7.5	7.5
Plug		<b>NEW</b>  CEE 16 A	<b>NEW</b>  CEE 16 A	CEE 32 A	CEE 32 A
Dimensions L x W x H	mm	735   580   1020	735   580   1020	735   580   1020	735   580   1020
Weight	kg	94	94	94	94

#### EQUIPMENT

High-pressure hose	m   Ord.no.	20 (DN8)   443812	20 (DN8)   443812	20 (DN8)   443812	20 (DN8)   443812
Trigger gun with safety catch	Model   Ord.no.	Starlet 3   12500	Starlet 3   12500	Starlet 3   12500	Starlet 3   12500
Lance with flat-jet nozzle	Nozzle   Ord.no.	 05   12420-D2505	 065   12420-D40065	 08   12420-D4008	 11   12420-D4011






PRESSURE WASHERS WITH INTERNAL COMBUSTION ENGINE

## EXCEPTIONAL CLEANING RESULTS, ANYWHERE, EVERY TIME

For these machines nowhere is too far: Kränzle pressure washers with petrol engines allow an almost unlimited radius of action. The reliable and maintenance-friendly Machines are reliable in every situation. Even a water connection is not absolutely necessary. Thanks to the suction hose the appliance can take water from pools, lakes or rivers, with a prefilter to protect against contamination. Highest cleaning power for convincing results are thus available everywhere.

### TABLE OF CONTENTS

Profi-Jet-Series .....	50-53
B-Series .....	54-55
 Accessories for plug-in system D12 .....	74-96

### KEY INDUSTRIES







## TECHNICAL HIGHLIGHTS



### PROVEN ENGINES

Service-friendly and economical: the reliable Honda Motors with low oil protection. Fuel consumption and noise development can be reduced via the optional speed regulation.



### OPERATION WITHOUT POWER/WATER CONNECTION

No electricity - no problem: petrol-powered engines are devices independent of the power supply, the Suction hose with suction filter for water basins or lakes do not require a mains water connection.



## Profi-Jet-Series



### CARRY HANDLE

portable and space-saving compact design

### STAINLESS STEEL PROTECTIVE COVER

protects against external contamination, durable and corrosion resistant



### HONDA PETROL ENGINE

reliable, service-friendly, L-type reduction version for optimum pairing, and with low oil protection

### STAINLESS STEEL PRESSURE GAUGE

easy reading of the working pressure

Profi-Jet B 13/150 | 618001

► **ACCESSORIES** | page 74-96



### EQUIPMENT

- Quick release plug-in system D12
- Kränzle axial pump
- Combustion engine Honda
- Stepless pressure regulation
- High-pressure hose with Twist-Stop screw connection
- Direct suction: Suction height 2.5 m



MODEL	Profi-Jet B 13/150	Profi-Jet B 10/200
Ord.no.	618001	618021

#### TECHNICAL SPECIFICATIONS

Operating pressure	bar   MPa	30-150   3-15	30-200   3-20
Water output	l/min   l/h	13   780	10   600
Admissible overpressure	bar   MPa	170   17	220   22
Engine		Honda GX160 LX	Honda GX200 LX
Engine power	kW   hp	3.6   4.9	4.3   5.8
Dimensions L x W x H	mm	520   360   420	520   360   420
Weight	kg	35	35

#### EQUIPMENT

High-pressure hose	m   Ord.no.	10 (DN8)   44878	10 (DN8)   41081
Trigger gun with safety catch	Model   Ord.no.	Starlet 4   12525	Starlet 4   12525
Lance with regulating nozzle	Nozzle   Ord.no.	● 05   12439-D2505	○ 03   12439-D2503
Lance with Dirtkiller	Nozzle   Ord.no.	● 05   12438-05	○ 03   12438-03
Water inlet filter	Ord.no.	13310	13310



## Profi-Jet-Series



**STAINLESS STEEL CHASSIS**  
durable and corrosion resistant

**CONVENIENT INTEGRATED HOSE REEL (VARIANT)**  
space-saving storage of the high-pressure hose with twist stop screw connection

**ACCESSORY STORAGE**  
neat storage for high pressure gun and lances

**STAINLESS STEEL PRESSURE GAUGE**  
easy reading of the working pressure

**HONDA PETROL ENGINE**  
reliable, service-friendly, L-type reduction version for optimum pairing, and with low oil protection

**AUTOMATIC SPEED REGULATION**  
reduces fuel consumption and noise levels (from model Profi-Jet B 16/220)

Profi-Jet B 16/220 T | 618049

► **ACCESSORIES** | page 74-96



### EQUIPMENT

- Quick release plug-in system D12
- Kränzle axial pump
- Combustion engine Honda
- Stepless pressure regulation
- High-pressure hose with Twist-Stop screw connection
- Direct suction: Suction height 2.5 m





MODEL	Profi-Jet B 13/150	Profi-Jet B 10/200	Profi-Jet B 16/220	Profi-Jet B 20/200	Profi-Jet B 16/250
Ord.no. without hose drum	618003	618023	618045	618065	618085
Ord.no. incl. hose drum	618007	618027	618049	618069	618089

#### TECHNICAL SPECIFICATIONS

Operating pressure	bar   MPa	30-150   3-15	30-200   3-20	30-220   3-22	30-200   3-20	30-250   3-25
Water output	l/min   l/h	13   780	10   600	16   960	20   1200	16   960
Admissible overpressure	bar   MPa	170   17	220   22	240   24	220   22	270   27
Engine		Honda GX160 LX	Honda GX200 LX	Honda GX340 LX	Honda GX390 LX	Honda GX390 LX
Engine power	kW   hp	3.6   4.9	4.3   5.8	8   10.9	8.7   11.8	8.7   11.8
Speed adjustment		–	–	●	●	●
Dimensions L x W x H without hose drum	mm	770   570   990	770   570   990	770   570   990	770   570   990	770   570   990
Dimensions L x W x H incl. hose drum	mm	770   570   1005	770   570   1005	785   570   1005	785   570   1005	785   570   1005
Weight without   incl. hose drum	kg	42   50	42   50	65   73	65   73	65   73

#### EQUIPMENT

High-pressure hose <b>without</b> hose drum	m   Ord.no.	10 (DN8)   44878	10 (DN8)   41081	10 (DN8)   41081	10 (DN8)   41081	10 (DN8)   41081
High-pressure hose <b>incl.</b> hose drum	m   Ord.no.	20 (DN8)   41083	20 (DN8)   41083	20 (DN8)   41083	20 (DN8)   41083	20 (DN8)   41083
Trigger gun with safety catch	Model   Ord.no.	Starlet 3   12500	Starlet 3   12500	Starlet 3   12500	Starlet 3   12500	Starlet 3   12500
Lance with regulating nozzle	Nozzle   Ord.no.	● 05   12431-D2505	○ 03   12431-D2503	● 05   12431-D2505	● 07   12431-D2507	● 045   12431-D25045
Lance with Dirtkiller	Nozzle   Ord.no.	● 05   12425-05	○ 03   12425-03	–	–	–
Lance with Turbokiller	Nozzle   Ord.no.	–	–	● 05   12430-05	● 07   12430-07	● 045   12430-045
Water inlet filter	Ord.no.	13310	13310	13310	13310	13310



#### Suction hose with suction filter

#### EXPERT TIP

For sucking in water from external sources  
 ■ Hose length 3 m

Ord.no.	150383
---------	--------

## B-Series



### CONVENIENT INTEGRATED HOSE REEL

space-saving storage of the high-pressure hose with twist stop screw connection

### ACCESSORY STORAGE

neat storage for high pressure gun and lances

### STAINLESS STEEL PRESSURE GAUGE

easy reading of the working pressure

### HONDA PETROL ENGINE

reliable, service-friendly, L-type reduction version for optimum pairing, and with low oil protection

### AUTOMATIC SPEED REGULATION

reduces fuel consumption and noise levels (from model B 230 T)

### IMPACT PROTECTION

reduces accidental damage to the high-pressure pump




B 240 T | 620023

► **ACCESSORIES** | page 74-96



### EQUIPMENT

 Quick release plug-in system D12

- Kränzle axial pump
- Combustion engine Honda
- Stepless pressure regulation
- High-pressure hose with Twist-Stop screw connection

- Locking brake
- Direct suction: Suction height 2.5 m



MODEL	B 170 T	B 230 T	B 240 T	B 270 T
Ord.no. incl. hose drum	620001	620013	620023	620033

#### TECHNICAL SPECIFICATIONS

Operating pressure	bar   MPa	30-150   3-15	30-200   3-20	30-220   3-22	30-250   3-25
Water output	l/min   l/h	12.5   750	20   1200	16   960	16   960
Admissible overpressure	bar   MPa	170   17	230   23	240   24	270   27
Engine		Honda GX160 LX	Honda GX390 LX	Honda GX340 LX	Honda GX390 LX
Engine power	kW   hp	3.6   4.9	8.7   11.8	8   10.9	8.7   11.8
Speed adjustment		–	●	●	●
Dimensions L x W x H	mm	720   570   960	720   570   960	720   570   960	720   570   960
Weight	kg	67	92	92	92

#### EQUIPMENT

High-pressure hose	m   Ord.no.	20 (DN8)   41083	20 (DN8)   41083	20 (DN8)   41083	20 (DN8)   41083
Trigger gun with safety catch	Model   Ord.no.	Starlet 3   12500	Starlet 3   12500	Starlet 3   12500	Starlet 3   12500
Lance with regulating nozzle	Nozzle   Ord.no.	● 05   12431-D2505	● 07   12431-D2507	● 05   12431-D2505	● 045   12431-D25045
Lance with Dirtkiller	Nozzle   Ord.no.	● 05   12425-05	–	–	–
Lance with Turbokiller	Nozzle   Ord.no.	–	● 07   12430-07	● 05   12430-05	● 045   12430-045
Water inlet filter	Ord.no.	13310	13310	13310	13310



#### Suction hose with suction filter

#### EXPERT TIP

For sucking in water from external sources

■ Hose length 3 m

Ord.no.	150383
---------	--------



# MAXIMUM CLEANING EFFICIENCY WITH HOT WATER



Dirt, bacteria and viruses make a big fuss: some contaminants, such as grease or oil, are difficult to remove. But it is easier with hot water. This is where Kränzle hot water pressure washers come into play. Their high water temperatures of up to 155 °C in the steam stage increase the cleaning power and also have a disinfecting effect.

**RP Pressure washers with in-line RP pump:**

Our flagship for the very highest applications: The Kränzle therm-RP-Series with innovative in-line RP pump delivers hot water at high pressure and is particularly suitable for applications where an above-average flushing effect at high working pressure is required. With a water output of up to 1600 l/h, even the most stubborn dirt does not stand a chance.

## TABLE OF CONTENTS

<b>RP</b> therm-RP-Series .....	58-61
<b>RP</b> therm-RP-Series - black edition .....	62-63
therm 1017-Series .....	64-65
therm-C-Series .....	66-67
therm-CA-Series .....	68-69
<b>RP</b> Accessories for plug-in system D12 .....	74-96

## KEY INDUSTRIES



# TECHNICAL HIGHLIGHTS



## TWIST-STOP SCREW CONNECTION

Go along with everything: provided with all machines: A special screw connection prevents the Twisting of the high-pressure hose during work and ensures so for consistent cleaning results in every situation.



## DIGITAL CONTROL PANEL

With the digital temperature control, the water temperature and the heat output can be measured exactly and can be controlled via two operating modes. This gives the ability to work precisely even with partial water quantities and low temperatures.



## SAFETY DEVICES

Protection at every aspect: features such as a safety valve, flow monitor, optical flame monitoring, overcurrent release, pressure switch and low fuel cut-off switch ensure for absolute safe operation.



## OPTICAL FLAME MONITORING AND THERMAL OVERLOAD PROTECTION

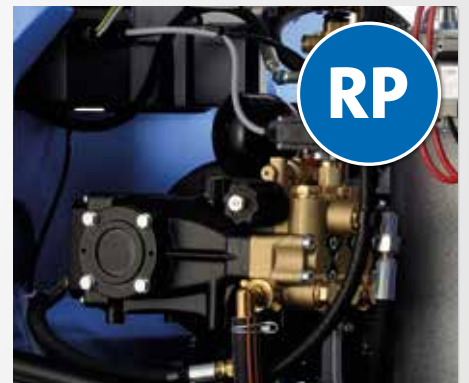
Electronic monitoring of combustion: Kränzle therm devices have a photocell to monitor the burner flame. This ensures safe operation at all times, even if the user is not near. Additionally, an overheating protection sensor measures the temperature at the exhaust; switching off heating automatically if more than 260 °C is detected.

(Exception: entry-level model therm-CA)



## TOTAL-STOP SYSTEM WITH DELAYED MOTOR SHUTDOWN

Energy consumption is reduced, longer life: when closing the high pressure gun the motor switches off automatically, relieves the high-pressure pump and drive and reduces noise. Thanks to a small time-delay when switching off machines means that with very short work breaks the full working pressure is immediately restored.



## INNOVATIVE IN-LINE RP PUMP

Proven technology convincingly enhanced: a Crankshaft moves the plungers in line via connecting rods the in-line RP pump. This special design enables even greater water flow with significantly higher washing effect than conventional pumps and ensures impressive properties:

- Power transmission as with a car engine
- extremely long service life
- integrated unloader valve
- Total-stop system



# therm-RP-Series



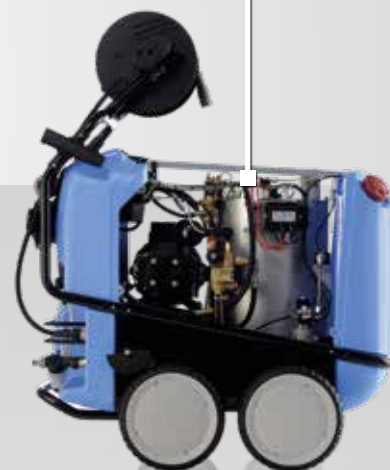
**ACCESSORY STORAGE**  
neat storage for high pressure gun and lances

**CONVENIENT INTEGRATED HOSE REEL (VARIANT)**  
space-saving storage of the high-pressure hose with twist stop screw connection

**REMOVABLE COVERS**  
convenient and easy service access

**DIGITAL CONTROL PANEL**  
digital temperature regulation with 2 different operation modes

**VISUAL FLAME MONITORING AND OVERHEATING PROTECTION**  
(on page 57)



therm-RP 1000 | 638210

► **ACCESSORIES** | page 74-96



## EQUIPMENT

- Quick release plug-in system D12
- Kränzle in-line RP pump
  - Total-stop system with delayed motor cut-off
  - Safety shutdown
  - Pressure regulation
  - Cleaning Agent Intake
  - Locking brake
  - Water tank: Volume 12 liters
  - Optional: Stainless steel heating coil

## EQUIPMENT HOT WATER

- Digital thermostat
- Flow monitor
- Combustion chamber pre-ventilation
- Visual flame monitoring
- Overheating protection (exhaust temperature in excess of 260 °C)
- Burner stops when there is a lack of heating oil
- Operating hours meter
- Fuel tank: 35 liters





#### VARIANT - NON-MARKING

42280

<b>NOM conversion kit</b> Version without drum	Ord.no.	<b>42280</b>
<b>NOM conversion kit</b> Version with drum	Ord.no.	<b>42281</b>

For further information on NON-Marking please refer to page 75

MODEL	therm-RP 1000 therm-RP 1000 T	therm-RP 1200 therm-RP 1200 T	therm-RP 1400 therm-RP 1400 T	therm-RP 1600 therm-RP 1600 T
<b>Ord.no.</b> without hose drum	<b>638202</b>	<b>638402</b>	<b>638600</b>	<b>638800</b>
<b>Ord.no. T</b> incl. hose drum	<b>638212</b>	<b>638412</b>	<b>638610</b>	<b>638810</b>
<b>Ord.no.</b> without hose drum ▶ <b>with stainless steel heating coil</b>	<b>638252</b>	<b>638452</b>	<b>638650</b>	<b>638850</b>
<b>Ord.no.</b> incl. hose drum ▶ <b>with stainless steel heating coil</b>	<b>638262</b>	<b>638462</b>	<b>638660</b>	<b>638860</b>

#### TECHNICAL SPECIFICATIONS

Operating pressure	bar   MPa	70-200   7-20	70-190   7-19	70-170   7-17	70-150   7-15
Water output	l/min   l/h	16.6   1000	20   1200	23.3   1400	26.7   1600
Admissible overpressure	bar   MPa	220   22	210   21	190   19	170   17
Motor speed	Rpm	1400	1400	1400	1400
Connection	V   ~   Hz   A	400   3   50   12.5	400   3   50   13.5	400   3   50   14.3	400   3   50   14.3
Power intake   Power output	kW	7.5   5.5	7.5   5.5	8.0   6.3	8.0   6.3
Power supply cable	m	7.5	7.5	7.5	7.5
Plug		<b>NEW</b> 16A CEE 16 A	<b>NEW</b> 16A CEE 16 A	CEE 32 A	CEE 32 A
Dimensions L x W x H without hose drum	mm	1050   800   1015	1050   800   1015	1050   800   1015	1050   800   1015
Dimensions L x W x H incl. hose drum	mm	1050   800   1300	1050   800   1300	1050   800   1300	1050   800   1300
Weight without   incl. hose drum	kg	210   218	210   218	210   218	210   218

#### TECHNICAL DATA HOT WATER

Hot water output (at 12 °C inlet)	°C	80	80	80	80
Steam level	°C	140	140	140	140
Oil consumption at max. heating output	kg/h   l/h	6.0   7.0	7.7   9.2	7.7   9.2	7.7   9.2
Heating oil consumption $\Delta T$ 45°	kg/h   l/h	5.6   6.6	5.6   6.6	5.6   6.6	5.6   6.6
Heating output	kW	65	84	84	84

#### EQUIPMENT

High-pressure hose without hose drum	m   Ord.no.	10 (DN8)   41081	10 (DN8)   41081	10 (DN8)   41081	10 (DN8)   41081
High-pressure hose incl. hose drum	m   Ord.no.	20 (DN8)   443812	20 (DN8)   443812	20 (DN8)   443812	20 (DN8)   443812
Trigger gun with safety catch	Model   Ord.no.	Starlet 3   12500	Starlet 3   12500	Starlet 3   12500	Starlet 3   12500
Lance with flat-jet nozzle	Nozzle   Ord.no.	● 05   12420-D2505	● 065   12420-D25065	● 08   12420-D2508	● 11   12420-D2511
Water inlet filter	Ord.no.	13310	13310	13310	13310

# therm-RP-Series



**DIGITAL CONTROL PANEL**  
digital temperature regulation  
with 2 different operation modes

**ACCESSORY STORAGE**  
neat storage for high  
pressure gun and lances

**REMOVABLE COVERS**  
convenient and easy service access

**AUTOMATIC HOSE REEL**  
automatic hose retraction with  
Twist-Stop screw connection

**VISUAL FLAME MONITORING AND  
OVERHEATING PROTECTION**  
(on page 59)



therm-RP 1400 AT | 638620

► **ACCESSORIES** | page 74-96



## EQUIPMENT

- Quick release plug-in system D12
- Kränzle in-line RP pump
  - Automatic hose reel
  - Total-stop system with delayed motor cut-off
  - Safety shutdown
  - Pressure regulation
  - Cleaning Agent Intake
  - Locking brake
  - Water tank: Volume 12 liters

## EQUIPMENT HOT WATER

- Digital thermostat
- Flow monitor
- Combustion chamber pre-ventilation
- Visual flame monitoring
- Overheating protection (exhaust temperature in excess of 260 °C)
- Burner stops when there is a lack of heating oil
- Operating hours meter
- Fuel tank: 35 liters

### AUTOMATIC HOSE REEL

By means of a return spring inside the drum the high pressure hose is automatically rolled up. Guide rollers enable flexible rolling up in all directions.



MODEL	therm-RP 1000 AT	therm-RP 1200 AT	therm-RP 1400 AT	therm-RP 1600 AT
Ord.no. <b>AT</b> incl. automatic hose reel	<b>638222</b>	<b>638422</b>	<b>638620</b>	<b>638820</b>

### TECHNICAL SPECIFICATIONS

Operating pressure	bar   MPa	70-200   7-20	70-190   7-19	70-170   7-17	70-150   7-15
Water output	l/min   l/h	16.6   1000	20   1200	23.3   1400	26.7   1600
Admissible overpressure	bar   MPa	220   22	210   21	190   19	170   17
Motor speed	Rpm	1400	1400	1400	1400
Connection	V   ~   Hz   A	400   3   50   12.5	400   3   50   13.5	400   3   50   14.3	400   3   50   14.3
Power intake   Power output	kW	7.5   5.5	7.5   5.5	8.0   6.3	8.0   6.3
Power supply cable	m	7.5	7.5	7.5	7.5
Plug		<b>NEW</b> 16A CEE 16 A	<b>NEW</b> 16A CEE 16 A	CEE 32 A	CEE 32 A
Dimensions L x W x H	mm	1300   800   1015	1300   800   1015	1300   800   1015	1300   800   1015
Weight	kg	240	240	240	240

### TECHNICAL DATA HOT WATER

Hot water output (at 12 °C inlet)	°C	80	80	80	80
Steam level	°C	140	140	140	140
Oil consumption at max. heating output	kg/h   l/h	6.0   7.0	7.7   9.2	7.7   9.2	7.7   9.2
Heating oil consumption $\Delta T$ 45°	kg/h   l/h	5.6   6.6	5.6   6.6	5.6   6.6	5.6   6.6
Heating output	kW	65	84	84	84

### EQUIPMENT

High-pressure hose	m   Ord.no.	20 (DN8)   41083	20 (DN8)   41083	20 (DN8)   41083	20 (DN8)   41083
Trigger gun with safety catch	Model   Ord.no.	Starlet 3   12500	Starlet 3   12500	Starlet 3   12500	Starlet 3   12500
Lance with flat-jet nozzle	Nozzle   Ord.no.	● 05   12420-D2505	● 065   12420-D25065	● 08   12420-D2508	● 11   12420-D2511
Water inlet filter	Ord.no.	13310	13310	13310	13310



# therm-RP-Series - black edition



**NEW**

**ACCESSORY STORAGE**  
neat storage for high pressure gun and lances

**REMOVABLE COVERS**  
convenient and easy service access

**CONVENIENT INTEGRATED HOSE REEL (VARIANT)**  
space-saving storage of the high-pressure hose with twist stop screw connection

**DIGITAL CONTROL PANEL**  
digital temperature regulation with 2 different operation modes

**VISUAL FLAME MONITORING AND OVERHEATING PROTECTION**  
(on page 57)



therm-RP 900 T | 638110

► **ACCESSORIES** | page 74-96



**EQUIPMENT**

- Quick release plug-in system D12
- Kränzle in-line RP pump
- Total-stop system with delayed motor cut-off
- Safety shutdown
- Pressure regulation
- Cleaning Agent Intake
- Locking brake
- Water tank: Volume 12 liters

**EQUIPMENT HOT WATER**

- Digital thermostat
- Flow monitor
- Combustion chamber pre-ventilation
- Visual flame monitoring
- Overheating protection (exhaust temperature in excess of 260 °C)
- Burner stops when there is a lack of heating oil
- Operating hours meter
- Fuel tank: 35 liters

## INTEGRATED AUTOMATIC HOSE REEL (VARIANT)

automatic hose retraction with Twist-Stop screw connection (therm-RP 900 AT)



MODEL	therm-RP 900	NEW	therm-RP 900 T	therm-RP 900 AT
Ord.no. without hose drum	638100			
Ord.no. <b>T</b> incl. hose drum			638110	
Ord.no. <b>AT</b> incl. automatic hose reel				638120

### TECHNICAL SPECIFICATIONS

Operating pressure	bar   MPa	70-170   7-17	70-170   7-17	70-170   7-17
Water output	l/min   l/h	15   900	15   900	15   900
Admissible overpressure	bar   MPa	190   19	190   19	190   19
Motor speed	Rpm	1400	1400	1400
Connection	V   ~   Hz   A	400   3   50   9.4	400   3   50   9.4	400   3   50   9.4
Power intake   Power output	kW	5.5   4.0	5.5   4.0	5.5   4.0
Power supply cable	m	7.5	7.5	7.5
Plug		CEE 16 A	CEE 16 A	CEE 16 A
Dimensions L x W x H	mm	1050   800   1015	1050   800   1300	1050   800   1015
Weight	kg	197	205	210

### TECHNICAL DATA HOT WATER

Hot water output (at 12 °C inlet)	°C	85	85	85
Steam level	°C	155	155	155
Oil consumption at max. heating output	kg/h   l/h	5.8   6.8	5.8   6.8	5.8   6.8
Heating oil consumption $\Delta T$ 45°	kg/h   l/h	4.2   5.0	4.2   5.0	4.2   5.0
Heating output	kW	60	60	60

### EQUIPMENT

High-pressure hose	m   Ord.no.	10 (DN8)   41081	20 (DN8)   443812	15 (DN8)   44879
Trigger gun with safety catch	Model   Ord.no.	Starlet 3   12500	Starlet 3   12500	Starlet 3   12500
Lance with flat-jet nozzle	Nozzle   Ord.no.	● 055   12420-D25055	● 055   12420-D25055	● 055   12420-D25055
Water inlet filter	Ord.no.	13310	13310	13310

# therm 1017-Series



## ACCESSORY STORAGE

neat storage for high pressure gun and lances

## CONVENIENT INTEGRATED HOSE REEL (VARIANT)

space-saving storage of the high-pressure hose with twist stop screw connection

## CONTROL PANEL

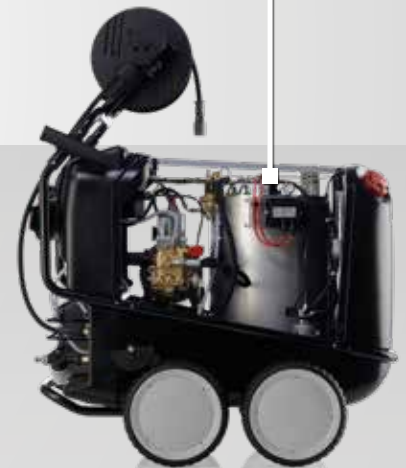
analogue temperature regulation

## REMOVABLE COVERS

convenient and easy service access

## VISUAL FLAME MONITORING AND OVERHEATING PROTECTION


(on page 57)



therm 1017 | 632210

► **ACCESSORIES** | page 74-96

### EQUIPMENT

-  Quick release plug-in system D12
- Kränzle axial pump
- Total-stop system with delayed motor cut-off
- Safety shutdown
- Pressure regulation
- Cleaning Agent Intake
- Locking brake
- Direct suction: Suction height 2.5 m
- Water tank: Volume 12 liters

### EQUIPMENT HOT WATER

- Eco mode
- Flow monitor
- Combustion chamber pre-ventilation
- Visual flame monitoring
- Overheating protection (exhaust temperature in excess of 260 °C)
- Burner stops when there is a lack of heating oil
- Fuel tank: 35 liters







MODEL	therm 1017 therm 1017 T
Ord.no. without hose drum	632200
Ord.no. incl. hose drum	632210

#### TECHNICAL SPECIFICATIONS

Operating pressure	bar   MPa	30-150   3-15
Water output	l/min   l/h	16.7   1000
Admissible overpressure	bar   MPa	170   17
Motor speed	Rpm	1400
Connection	V   ~   Hz   A	400   3   50   8.5
Power intake   Power output	kW	5.5   4.0
Power supply cable	m	7.5
Plug		CEE 16 A
Dimensions L x W x H without hose drum	mm	1050   800   1015
Dimensions L x W x H incl. hose drum	mm	1050   800   1300
Weight without   incl. hose drum	kg	193   198

#### TECHNICAL DATA HOT WATER

Hot water output (at 12 °C inlet)	°C	80
Steam level	°C	140
Oil consumption at max. heating output	kg/h   l/h	6.2   7.4 ▶ eco: 4.8   6.3
Heating oil consumption $\Delta T$ 45°	kg/h   l/h	5.6   6.6
Heating output	kW	68

#### EQUIPMENT

High-pressure hose without hose drum	m   Ord.no.	10 (DN8)   44878
High-pressure hose incl. hose drum	m   Ord.no.	20 (DN8)   44877
Trigger gun with safety catch	Model   Ord.no.	Starlet 3   12500
Lance with flat-jet nozzle	Nozzle   Ord.no.	● 06   12420-D2506
Water inlet filter	Ord.no.	13310

# therm-C-Series



### CONTROL PANEL

analogue temperature regulation

### CONVENIENT INTEGRATED HOSE REEL (VARIANT)

space-saving storage of the high-pressure hose with twist stop screw connection

### ACCESSORY STORAGE

neat storage for high pressure gun and lances

### REMOVABLE COVERS

convenient and easy service access

### VISUAL FLAME MONITORING AND OVERHEATING PROTECTION


(on page 57)



therm-C 13/180 | 628210

► **ACCESSORIES** | page 74-96

### EQUIPMENT

-  Quick release plug-in system D12
- Kränzle axial pump
- Total-stop system with delayed motor cut-off
- Safety shutdown
- Pressure regulation
- Cleaning Agent Intake
- Locking brake
- Water tank: Volume 3 liters



### EQUIPMENT HOT WATER

- Flow monitor
- Combustion chamber pre-ventilation
- Visual flame monitoring
- Overheating protection (exhaust temperature in excess of 260 °C)
- Burner stops when there is a lack of heating oil
- Fuel tank: 25 liters



#### VARIANT - NON-MARKING

42271

<b>NOM conversion kit</b> Version without drum	Ord.no.	<b>42270</b>
<b>NOM conversion kit</b> Version with drum	Ord.no.	<b>42271</b>

For further information on NON-Marking please refer to page 75

MODEL	therm C 11/130 therm C 11/130 T	therm C 13/180 therm C 13/180 T	therm C 15/150 therm C 15/150 T
<b>Ord.no.</b> without hose drum	<b>628000</b>	<b>628200</b>	<b>628350</b>
<b>Ord.no.</b> incl. hose drum	<b>628010</b>	<b>628210</b>	<b>628360</b>

#### TECHNICAL SPECIFICATIONS

Operating pressure	bar   MPa	30-130   3-13	30-180   3-18	30-150   3-15
Water output	l/min   l/h	11   660	13   780	15   900
Admissible overpressure	bar   MPa	145   14.5	200   20	170   17
Motor speed	Rpm	1400	1400	1400
Connection	V   ~   Hz   A	230   1   50   15	400   3   50   8.7	400   3   50   8.7
Power intake   Power output	kW	3.4   2.3	4.8   4.0	4.8   4.0
Power supply cable	m	5	7.5	7.5
Plug		Schuko	CEE 16 A	CEE 16 A
Dimensions L x W x H without hose drum	mm	860   580   970	860   580   970	860   580   970
Dimensions L x W x H incl. hose drum	mm	860   580   1220	860   580   1220	860   580   1220
Weight without   incl. hose drum	kg	164   169	164   169	164   169

#### TECHNICAL DATA HOT WATER

Hot water output (at 12 °C inlet)	°C	80	80	80
Steam level	°C	140	150	150
Oil consumption at max. heating output	kg/h   l/h	5.1   6.1	5.8   6.8	6.0   7.1
Heating oil consumption $\Delta T$ 45°	kg/h   l/h	3.2   3.8	3.8   4.5	4.3   5.1
Heating output	kW	55	60	65

#### EQUIPMENT

High-pressure hose without hose drum	m   Ord.no.	10 (DN8)   44878	10 (DN8)   44878	10 (DN8)   44878
High-pressure hose incl. hose drum	m   Ord.no.	15 (DN8)   44879	15 (DN8)   44879	15 (DN8)   44879
Trigger gun with safety catch	Model   Ord.no.	Starlet 3   12500	Starlet 3   12500	Starlet 3   12500
Lance with flat-jet nozzle	Nozzle   Ord.no.	● 045   12420-D25045	● 045   12420-D25045	● 055   12420-D25055
Water inlet filter	Ord.no.	13310	13310	13310



# therm-CA-Series



**ACCESSORY STORAGE**  
neat storage for high pressure gun and lances

**CONVENIENT INTEGRATED HOSE REEL (VARIANT)**  
space-saving storage of the high-pressure hose with twist stop screw connection

**REMOVABLE COVERS**  
convenient and easy service access

**CONTROL PANEL**  
analogue temperature regulation

**POWERFUL ENTRY MODEL**  
with all important basic functions

therm-CA 12/150 | 626210

► **ACCESSORIES** | page 74-96

## EQUIPMENT

- Quick release plug-in system D12
- Kränzle axial pump
- Total-Stop system
- Pressure regulation
- Cleaning Agent Intake
- Locking brake
- Water tank: Volume 3 liters



## EQUIPMENT HOT WATER

- Flow monitor
- Combustion chamber pre-ventilation
- Fuel tank: 25 liters



MODEL	therm CA 11/130 therm CA 11/130 T	therm CA 12/150 therm CA 12/150 T
<b>Ord.no.</b> without hose drum	<b>626000</b>	<b>626200</b>
<b>Ord.no.</b> incl. hose drum	<b>626010</b>	<b>626210</b>

#### TECHNICAL SPECIFICATIONS

Operating pressure	bar   MPa	30-130   3-13	30-150   3-15
Water output	l/min   l/h	11   660	12   720
Admissible overpressure	bar   MPa	145   14.5	165   16.5
Motor speed	Rpm	1400	1400
Connection	V   ~   Hz   A	230   1   50   15	400   3   50   7.2
Power intake   Power output	kW	3.4   2.3	3.8   3.0
Power supply cable	m	5	7.5
Plug		Schuko	CEE 16 A
Dimensions L x W x H without hose drum	mm	860   580   970	860   580   970
Dimensions L x W x H incl. hose drum	mm	860   580   1220	860   580   1220
Weight without   incl. hose drum	kg	159   164	159   164

#### TECHNICAL DATA HOT WATER

Hot water output (at 12 °C inlet)	°C	80	80
Steam level	°C	140	140
Oil consumption at max. heating output	kg/h   l/h	5.1   6.1	5.4   6.4
Heating oil consumption $\Delta T$ 45°	kg/h   l/h	3.2   3.8	3.5   4.1
Heating output	kW	55	58

#### EQUIPMENT

High-pressure hose without hose drum	m   Ord.no.	10 (DN8)   44878	10 (DN8)   44878
High-pressure hose incl. hose drum	m   Ord.no.	15 (DN8)   44879	15 (DN8)   44879
Trigger gun with safety catch	Model   Ord.no.	Starlet 3   12500	Starlet 3   12500
Lance with flat-jet nozzle	Nozzle   Ord.no.	● 045   12420-D25045	● 045   12420-D25045
Water inlet filter	Ord.no.	13310	13310





ELECTRICALLY HEATED HOT WATER PRESSURE WASHERS

## EMISSION-FREE, INSTANT HOT WATER AND IMPRESSIVELY THOROUGH CLEANING

Clean air, clean room: Our electrically heated pressure washers are especially suitable for use in closed rooms without exhaust air, in clean rooms or in health and hygiene sensitive areas. Temperatures of up to 80 °C increase the cleaning effect for stubborn dirt and the electrically operated instantaneous water heater enables emission-free working.

### TABLE OF CONTENTS

 e-therm-Series .....	72-73
 Accessories for plug-in system D12 .....	74-96

### KEY INDUSTRIES







## TECHNICAL HIGHLIGHTS



**ELECTRICALLY HEATED INSTANTANEOUS WATER HEATER**  
 Stable heat: the instantaneous water heater can be operated with up to 48 KW and enables even in continuous operation Temperatures up to 80 °C. It ensures a uniform water temperature and is therefore ideally suited for cleaning of fats and oils.



**DIGITAL THERMOSTAT**  
 The temperature is controlled via the digital thermostat. This allows the water temperature to be maintained at a constant level. An integrated operating hours counter determines the required service intervals.



**INTEGRATED HOSE REEL**  
 Space-saving and convenient: with a folding crank handle for practical, neat storage of the high-pressure hose. A special locking device holds the reel in the desired position.



**ECO-MODE**  
 On a small "flame": with the Eco level, the user can keep the maximum working temperature at 55 °C and thus Reduce electricity consumption up to 50%.  
 (for e-therm 603 M 36, e-therm 873 M 36 and e-therm 873 M 48)

# e-therm-Series



**ACCESSORY STORAGE**  
neat storage for high pressure gun and lances

**CONVENIENT INTEGRATED HOSE REEL (VARIANT)**  
space-saving storage of the high-pressure hose with twist stop screw connection

**DIGITAL CONTROL PANEL**  
digital temperature regulation with 2 different operation modes


**ECO LEVEL**  
for energy-saving use (e-therm 603 M 36, e-therm 873 M 36, e-therm 873 M 48)



e-therm 603 M 36 | 642260

► **ACCESSORIES** | page 74-96

## EQUIPMENT

-  Quick release plug-in system D12
- Kränzle axial pump
- Total-stop system with delayed motor cut-off
- Safety shutdown
- Pressure regulation
- Locking brake
- Water tank: Volume 12 liters (e-therm 603 M 36, e-therm 873 M 36, e-therm 873 M 48)

## EQUIPMENT HOT WATER ELECTRICALLY HEATED

- Digital thermostat
- Flow monitor
- Overheating protection
- Operating hours mete





#### VARIANT - NON-MARKING

<b>NOM conversion kit</b> Version without drum	Ord.no.	<b>42280</b>
<b>NOM conversion kit</b> Version with drum	Ord.no.	<b>42281</b>

For further information on NON-Marking please refer to page 75

MODEL	e-therm 500 M 18 e-therm 500 M 18 T	e-therm 500 M 24 e-therm 500 M 24 T	e-therm 603 M 36 e-therm 603 M 36 T	e-therm 873 M 36 e-therm 873 M 36 T	e-therm 873 M 48 e-therm 873 M 48 T
<b>Ord.no.</b> without hose drum	<b>642050</b>	<b>642150</b>	<b>642250</b>	<b>642300</b>	<b>642350</b>
<b>Ord.no.</b> incl. hose drum	<b>642060</b>	<b>642160</b>	<b>642260</b>	<b>642310</b>	<b>642360</b>

#### TECHNICAL SPECIFICATIONS

Operating pressure	bar   MPa	30-130   3-13	30-130   3-13	30-150   3-15	30-150   3-15	30-150   3-15
Water output	l/min   l/h	8   480	8   480	10   600	13   780	13   780
Admissible overpressure	bar   MPa	150   15	150   15	170   17	170   17	170   17
Motor speed	U/min	1400	1400	1400	1400	1400
Connection	V   ~   Hz   A	400   3   50   29	400   3   50   39	400   3   50   55	400   3   50   59	400   3   50   76
Power intake	kW	20	27	38	40	52
Power supply cable	m	5	5	5	5	5
Plug		CEE 32 A	CEE 63 A	CEE 63 A	CEE 63 A	CEE 125 A
Eco level		–	–	●	●	●
Dimensions L x W x H without hose drum	mm	1050   800   1015	1050   800   1015	1050   800   1015	1050   800   1015	1050   800   1015
Dimensions L x W x H incl. hose drum	mm	1050   800   1450	1050   800   1450	1050   800   1450	1050   800   1450	1050   800   1450
Weight without   incl. hose drum	kg	128   136	128   136	160   168	160   168	160   168

#### TECHNICAL DATA HOT WATER

Hot water output (at 12 °C inlet)	°C	48	60	75	68	80
Heating output	kW	18	24	36	36	48

#### EQUIPMENT

High-pressure hose without hose drum	m   Ord.no.	10 (DN8)   41081	10 (DN8)   41081	10 (DN8)   41081	10 (DN8)   41081	10 (DN8)   41081
High-pressure hose incl. hose drum	m   Ord.no.	20 (DN8)   443812	20 (DN8)   443812	20 (DN8)   443812	20 (DN8)   443812	20 (DN8)   443812
Trigger gun with safety catch	Model   Ord.no.	Starlet 3   12500	Starlet 3   12500	Starlet 3   12500	Starlet 3   12500	Starlet 3   12500
Lance with flat-jet nozzle	Nozzle   Ord.no.	○ 03   12420-D2503	○ 03   12420-D2503	● 035   12420-D25035	● 05   12420-D2505	● 05   12420-D2505
Water inlet filter	Ord.no.	13310	13310	13310	13310	13310





# WITH THE RIGHT TOOLS EVERYTHING IS ALWAYS UNDER CONTROL

Ready for use with one click: Our versatile range of accessories turns every Kränzle into an all-rounder for numerous areas of application. Whether surface or pipe cleaning, sandblasting work or particularly thorough cleaning with foam to loosen coarse dirt. All accessories are equipped with our quick-change plug-in system, which ensures the quick, easy and safe connection of cleaning lances and accessories.



## TABLE OF CONTENTS

Trigger guns with safety catch .....	76-77
Cleaning lances .....	78-83
Floor cleaners .....	84
Foam cleaning   Additive .....	85
Telescopic Lance .....	86-87
Special accessories .....	88
Intake / extraction   Filter .....	89
Stainless steel table .....	90-91
Wall holders .....	92
Lance holder   Hose reels .....	93
Adapter .....	93
Conversion to plug-in system D12 .....	94-95
High-pressure hoses .....	96



## TECHNICAL HIGHLIGHTS



### QUICK RELEASE PLUG-IN SYSTEM

Sophisticated, fast and reliable: the quick release plug-in system with hardened stainless steel components ensures simple and always safe connection of the safety shut-off gun with the lance.



### HEXAGONAL ANTI-ROTATION LOCK

Cleaning lances and accessories equipped with a hexagonal coupling can be locked against rotation in six different positions. This prevents the accessories from twisting unintentionally and allows them to be guided by moving the gun.



### NON-MARKING EXECUTION (NOM)

Particularly suitable for use in hygiene and sanitary areas: The Kränzle NoM versions leave no traces or stripes, their abrasion resistance also ensures a longer service life of hoses and wheels.



### TWIST-STOP SCREW CONNECTION

Go along with everything: provided with all machines: A special screw connection prevents the Twisting of the high-pressure hose during work and ensures so for consistent cleaning results in every situation.



# WORKS AS WELL

# AS IT LOOKS

## STARLET 3

The Starlet 3 combines function and design for precise, smooth operation. The lightweight design of the safety shut-off gun makes it comfortable to hold for long periods of time and allows you to work comfortably in pressure ranges up to 270 bar and water flow rates up to 40 l/min.



### TECHNICAL DATA

Outlet	plug-in system D12
Operating pressure max.	270 bar   27 MPa
Water output max.	40 l/min
Temperature max.	150 °C
<b>Ord.no.</b>	<b>12500</b>

## TECHNICAL HIGHLIGHTS

- **COMPACT DESIGN**  
with modern design for comfortable handling
- **ERGONOMIC HANDLE**  
Conforms to the natural shape of your hand for fatigue-free use
- **SMOOTH-RUNNING TRIGGER**  
for easier water flow control
- **HEXAGONAL ANTI-TWIST LOCK**  
Allows anti-twist accessories to be locked in six different positions





# COMFORT AND DURABILITY FOR THE PERFECT CLEANING EXPERIENCE

## STARLET 4

The Starlet 4 gun combines quality and reliability for professional cleaning. The pressure washer offers comfortable handling and and comfort in operation control of the water flow thanks to its lightweight and robust design. Whatever your cleaning requirements may be the Starlet 4 is designed for a working pressure of 210 bar and a water flow of 20 l/min, making it the ideal choice for most cleaning tasks.



### TECHNICAL DATA

Outlet	plug-in system D12
Operating pressure max.	210 bar   21 MPa
Water output max.	20 l/min
Temperature max.	100 °C
<b>Ord.no.</b>	<b>12525</b>

### TECHNICAL HIGHLIGHTS

- **ERGONOMIC DESIGN**  
for a secure and comfortable grip during the cleaning process
- **HEXAGONAL ANTI-TWIST LOCK**  
for locking accessories in six different positions
- **ERGONOMIC HANDLE**  
for fatigue-free operation
- **SMOOTH TRIGGER ACTION**  
Requires less effort



# CLEVER NOZZLE TECHNOLOGY



# FOR MAXIMUM

# CLEANING POWER

## LANCE WITH PENDULUM NOZZLE

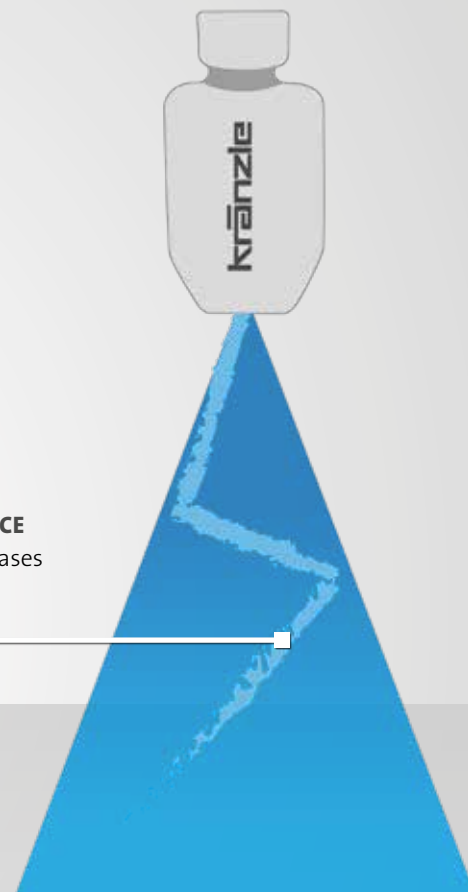
Convinces even under the toughest conditions: The new cleaning lance with pendulum nozzle made of wear-free stainless steel removes the most stubborn dirt and at the same time ensures area-wide cleaning. Its intelligent design combines the advantages of a flat jet lance with the power of a spot jet. An oscillating water jet delivers excellent cleaning results with significantly increased rinsing/spraying performance.

- produces a unique fluid jet (Coandă effect)
- without moving parts, thus robust and durable
- saves energy and water due to faster cleaning
- low vibrations and noise development

**PRACTICALLY INDESTRUCTIBLE**  
made of stainless steel



**INTELLIGENT FLOW GUIDANCE**  
the oscillating point jet increases the cleaning power

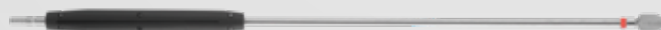


## CLEANING LANCES



12434-PD4503

Lanze mit Pendeldüse				NEW
Length	mm	Nozzle size	Spraying angle	Ord.no.
500		○ 03	45°	<b>12434-PD4503</b>
500		● 042	45°	<b>12434-P45042</b>



12424-PD3008

### Lance with pendulum nozzle

- grip plates

Length	mm	Nozzle size	Spraying angle	Ord.no.
1000		● 05	30°	<b>12424-PD3005</b>
1000		● 07	30°	<b>12424-PD3007</b>
1000		● 08	30°	<b>12424-PD3008</b>
1000		● 11	30°	<b>12424-PD3011</b>











# CLEANING LANCES



12435-M20028

Lance with flat jet nozzle				
Length	mm	Nozzle size	Spraying angle	Ord.no.
500		○ 028	20°	<b>12435-M20028</b>
500		○ 03	20°	<b>12435-M2003</b>
500		● 042	20°	<b>12435-M20042</b>
500		● 045	20°	<b>12435-M20045</b>
500		1/4" female, without nozzle **	without nozzle **	<b>12435-XXX</b>

### FLAT JET NOZZLE

Our recommendation for cleaning sensitive surfaces. The flat spray nozzle with its conical jet (spraying angle: 20 - 40°) works particularly well and even produces a sweeping effect to push dirt and debris away from the cleaning area.



12420-D2503

### Lance with flat jet nozzle

■ grip plates

Length	mm	Nozzle size	Spraying angle	Ord.no.
1000		○ 03	25°	<b>12420-D2503</b>
1000		● 035	25°	<b>12420-D25035</b>
1000		● 04	25°	<b>12420-D2504</b>
1000		● 045	25°	<b>12420-D25045</b>
1000		● 05	25°	<b>12420-D2505</b>
1000		● 055	25°	<b>12420-D25055</b>
1000		● 06	25°	<b>12420-D2506</b>
1000		● 065	25°	<b>12420-D25065</b>
1000		● 07	25°	<b>12420-D2507</b>
1000		● 075	25°	<b>12420-D25075</b>
1000		● 08	25°	<b>12420-D2508</b>
1000		● 085	25°	<b>12420-D25085</b>
1000		● 11	25°	<b>12420-D2511</b>
1000		● 125	25°	<b>12420-D25125</b>
1000		● 05	40°	<b>12420-D4005</b>
1000		● 06	40°	<b>12420-D4006</b>
1000		● 065	40°	<b>12420-D40065</b>
1000		● 08	40°	<b>12420-D4008</b>
1000		● 085	40°	<b>12420-D40085</b>
1000		● 11	40°	<b>12420-D4011</b>
1000		● 125	40°	<b>12420-D40125</b>
1000		15	40°	<b>12420-D4015</b>
1000		175	40°	<b>12420-D40175</b>
1000		20	40°	<b>12420-D4020</b>
1000		1/4" female, without nozzle **	without nozzle **	<b>12420-XXX</b>
1250		1/4" female, without nozzle **	without nozzle **	<b>124220-XXX</b>
1500		1/4" female, without nozzle **	without nozzle **	<b>124210-XXX</b>



**20° SPRAYING ANGLE**  
Knife nozzle  
Material: Brass

**25° SPRAYING ANGLE**  
Flat-jet nozzle  
Material: Stainless steel

**40° SPRAYING ANGLE**  
Flat-jet nozzle  
Material: Stainless steel

**\*\*Please order high-pressure nozzle separately.**



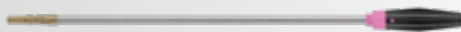
# CLEANING LANCES

## VARIO-JET

The spray pattern can be adjusted from pointed jet to a wide spray fan. In addition, for high-pressure cleaners with an integrated chemical injector, the Vario-jet lance has an adjustable nozzle that allows the user switch from spraying water to spraying detergent. As such, cleaning foam or detergent can be applied without the need to change accessories.

## VARIO-JET DUO

The spray pattern can be adjusted from pointed jet to a wide spray fan.



Lance with Vario-Jet			
■ with anti-twist protection			
Length	mm	Nozzle size	Ord.no.
500		○ 028	<b>12437-028</b>
500		○ 03	<b>12437-03</b>
500		● 042	<b>12437-042</b>

Lance with Vario-Jet Duo			
Length	mm	Nozzle size	Ord.no.
500		● 028	<b>12433-028</b>
500		○ 03	<b>12433-03</b>
500		● 042	<b>12433-042</b>

12436-M20042



Stainless steel lance with regulating nozzle				
■ max. 250 bar   25 MPa		■ max. 150 °C		■ with anti-twist protection
Length	mm	Nozzle size	Spraying angle	Ord.no.
500		● 042	20°	<b>12436-M20042</b>
500		○ 03	20°	<b>12439-D2503</b>
500		● 05	20°	<b>12439-D2505</b>

12431-D2503



Stainless steel lance with regulating nozzle				
■ max. 250 bar   25 MPa		■ max. 150 °C		■ with grip plates
Length	mm	Nozzle size	Spraying angle	Ord.no.
1000		○ 03	25°	<b>12431-D2503</b>
1000		● 045	25°	<b>12431-D25045</b>
1000		● 05	25°	<b>12431-D2505</b>
1000		● 07	25°	<b>12431-D2507</b>
1000		R 1/4" IG, without nozzle **	without nozzle **	<b>132061</b>
1500		R 1/4" IG, without nozzle **	without nozzle **	<b>132062</b>

132051



132060



Short regulating nozzle				
Length	mm	anti-twist protection	Nozzle size	Ord.no.
180		●	R 1/4" IG, without nozzle **	<b>132051</b>
340		grip plates	R 1/4" IG, without nozzle **	<b>132060</b>

## LANCE WITH CONTROL NOZZLE

The working pressure can be set directly on the lance and for different tasks settings, for example more powerful flat jet with high pressure or more practical rinsing jet in low pressure operation.



**\*\*Please order high-pressure nozzle separately.**



# CLEANING LANCES



12438-028

### Lance with Dirtkiller

- Water output max. 15 l/min
- Operating pressure max. 180 bar | 18 MPa

Length	mm	Nozzle size	Ord.no.
500		○ 028	<b>12438-028</b>
500		○ 03	<b>12438-03</b>
500		○ 042	<b>12438-042</b>
500		○ 045	<b>12438-045</b>
500		○ 05	<b>12438-05</b>
500		● 055	<b>12438-055</b>



12425-042

### Lance with Dirtkiller

- Water output max. 15 l/min
- Operating pressure max. 180 bar | 18 MPa
- grip plates

Length	mm	Nozzle size	Ord.no.
1000		○ 03	<b>12425-03</b>
1000		○ 035	<b>12425-035</b>
1000		○ 042	<b>12425-042</b>
1000		○ 045	<b>12425-045</b>
1000		○ 05	<b>12425-05</b>
1000		● 055	<b>12425-055</b>
1000		○ 06	<b>12425-06</b>
1000		○ 07	<b>12425-07</b>
1000		○ 075	<b>12425-075</b>

## DIRTKILLER AND TURBOKILLER

On insensitive surfaces the high pressure nozzle of the dirt killer with its rotating ceramic ball, removes even the most stubborn stains without residue. The turbokiller comes into its own when in most challenging cleaning assignments.



Figure: Dirtkiller

Figure: Turbokiller



12430-045

### Lance with Turbokiller

- Water output max. 40 l/min
- Operating pressure max. 250 bar | 25 MPa
- grip plates

Length	mm	Nozzle size	Ord.no.
1000		○ 035	<b>12430-035</b>
1000		○ 04	<b>12430-04</b>
1000		○ 045	<b>12430-045</b>
1000		○ 05	<b>12430-05</b>
1000		● 055	<b>12430-055</b>
1000		○ 07	<b>12430-07</b>
1000		○ 08	<b>12430-08</b>
1000		○ 09	<b>12430-09</b>
1000		○ 10	<b>12430-10</b>
1000		○ 11	<b>12430-11</b>
1000		12	<b>12430-12</b>







# CLEANING LANCES



410756

## Underbody lance

For hard-to-reach areas  
 ■ with anti-twist protection

Length	mm	Nozzle size	Ord.no.
500		● 07	<b>410756</b>



410755

## Underbody lance

For hard-to-reach areas  
 ■ with anti-twist protection

Length	mm	Nozzle size	Ord.no.
1000		● 07	<b>410755</b>



## Toilet lance

■ with anti-twist protection    ■ with regulating nozzle

Ord.no.	12540
Length	mm 500
Nozzle size	D25055



## Bend lance with handgrip

Infinite adjustment of bending angle from 20° to 140°

Ord.no.	121801-XXX
Length	mm 1100
Outlet	R 1/4" IG, without nozzle **



121332

## Double lance with turning hand-grip

Infinite variable control of working pressure  
 ■ with anti-twist protection

Length	mm	Nozzle size	Ord.no.
660		D3035 **	<b>121332</b>



12133

## Double lance with turning hand-grip

Infinite variable control of working pressure

Length	mm	Nozzle size	Ord.no.
1000		D3035 **	<b>12133</b>



125301

## Double lance with turning knob

Infinite variable control of working pressure  
 ■ with anti-twist protection

Length	mm	Nozzle size	Ord.no.
660		D3035 **	<b>125301</b>



125302

## Double lance with turning knob

Infinite variable control of working pressure

Length	mm	Nozzle size	Ord.no.
1000		D3035 **	<b>125302</b>



411545

## Lance extension

■ with anti-twist protection

Length	mm	Inlet/Outlet	Ord.no.
342		Plug-in system D12	<b>411544</b>
500		Plug-in system D12	<b>411545</b>



411547

## Lance extension

■ grip plates

Length	mm	Inlet/Outlet	Ord.no.
1000		Plug-in system D12	<b>411546</b>
1250		Plug-in system D12	<b>411547</b>
1500		Plug-in system D12	<b>411548</b>

\*\* Low-pressure nozzle serially included. Order high-pressure nozzle separately.



# FLOOR CLEANERS



## Round Cleaner UFO short

for small to medium-sized surfaces

<b>Ord.no.</b>	<b>41855</b>	
<b>+ Adapter D12</b>	<b>12441</b>	
Inlet	M22x1.5 AG	
Ø	mm	300
Operating pressure	bar   MPa	180   18
Water output max.	l/min	12
Weight	kg	1.9
Nozzle size	045	



## Round Cleaner UFO long

for small to medium-sized surfaces

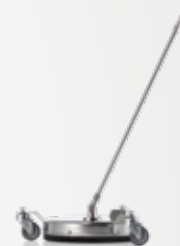
<b>Ord.no. without wheels</b>	<b>41880</b>	
<b>Ord.no. with wheels</b>	<b>41881</b>	
Ø	mm	300
Operating pressure	bar   MPa	180   18
Water output max.	l/min	12
Weight without wheels	kg	2.4
Weight with wheels	kg	3.1
Nozzle size	045	



## Round Cleaner UFO long stainless steel

for small to medium-sized surfaces

<b>Ord.no. Nozzle size 045</b>	<b>41891</b>	
<b>Ord.no. Nozzle size 055</b>	<b>41890</b>	
Ø	mm	350
Operating pressure	bar   MPa	210   21
Water output max.	l/min	15
Weight	kg	5.5



## Round Cleaner INOX 300

for medium-sized to large surfaces

<b>Ord.no.</b>	<b>41813</b>	
Ø	mm	300
Operating pressure	bar   MPa	160   16.0
Water output max.	l/min	12
Weight	kg	2.9
Nozzle size	045	



## Round Cleaner INOX 410

for large to very large surfaces

<b>Ord.no.</b>	<b>41814</b>	
Ø	mm	410
Operating pressure	bar   MPa	180   18.0
Water output max.	l/min	14
Weight	kg	3.6
Nozzle size	045	



## Round Cleaner INOX 520

for large to very large surfaces

<b>Ord.no.</b>	<b>41812</b>	
Ø	mm	520
Operating pressure	bar   MPa	220   22.0
Water output max.	l/min	26
Weight	kg	11.4
Nozzle size	06	

**\*\* When used with Starlet 3, the lance extension Ord.no. 411544 is required.**



# FOAM CLEANING | ADDITIVE



135303



135313

## Foam lance

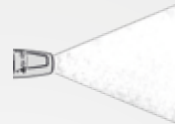
Production of highly effective foam

- adjustable spraying angle (spot jet - flat-jet)
- incl. screw cap

Container	Liter	Ord.no.
1		<b>135303</b>
2		<b>135313</b>



SPOT JET



FLAT-JET

1 Liter



2 Liter

## Spare container foam lance

For changing and storing cleaning agents

Container without lid	Ord.no.
1 Liter	<b>135320</b>
2 Liter	<b>135321</b>
Screw cap	<b>135336</b>

412710



412711

412721



412731



## Kränzle Neutral

Universal cleaner for removal of strong contaminations

- pH value\*\*: 8.5
- Mixing ratio: 1:3

Container	Liter	Ord.no.
1		<b>412710</b>
5		<b>412711</b>
25		<b>412712</b>
950		<b>412718</b>

**NEW**

## Kränzle Plus

Special cleaner to degrease and clean

- pH value\*\*: 10.5
- Mixing ratio: 1:3

Container	Liter	Ord.no.
5		<b>412721</b>
25		<b>412722</b>

## Kränzle Marine

Highly alkaline intensive cleaner dissolves soot, oil and grease stains

- pH value\*\*: 11.0
- Mixing ratio: 1:3

Container	Liter	Ord.no.
5		<b>412731</b>
25		<b>412732</b>



## Special Descaler

Descaling concentrate for the heating coil of hot water pressure washers

- pH value\*\*: 0.5

Container	Liter	Ord.no.
1		<b>412580</b>



## High-performance transmission oil

For all Kränzle high pressure pumps

Container	Liter	Ord.no.
0.25		<b>400931</b>
1		<b>400932</b>
5		<b>400933</b>
20		<b>400934</b>



### Important note:

When using chemical cleaning agents, observe the respective regulations, provisions, safety notes and safety data sheets.

Safety data sheets under: [www.kraenzle.com/sda](http://www.kraenzle.com/sda)

\*\*pH value: Undiluted

We recommend testing the cleaning agent on the surface to be cleaned before starting.



# POWERFUL TOOL FOR PROFESSIONAL CLEANING WORK

## TELESCOPIC LANCE

The telescope lance offers a convenient and effective solution for cleaning hard-to-reach places at great heights. With this telescope lance, you can work without scaffolding or a lifting platform and safely clean various surfaces from the ground, including facades, ceilings, glass surfaces and solar installations.



**ERGONOMIC HIGH PRESSURE GUN**  
Ensures comfortable and safe handling

**JET TUBES**  
made of fibreglass and aluminium (3 segments)

**SOFT-GRIP**  
non-slip foam material for a comfortable grip

**INTERNAL HIGH PRESSURE HOSE**  
ensures a reliable and safe water supply during the cleaning process

### CARRYING STRAP

As an option, the telescopic lance can be supplied with a carrying or shoulder strap to make transport and handling even more repeated comfortable.

Ord.no. 122100



### Telescopic lance

For easy cleaning of hard-to-reach places at great heights. Clean without scaffolding or lifting platform - safely from the ground.

<b>Ord.no.</b>	<b>121900</b>
Inlet/Outlet	M22x1.5 AG
Length min.   max.	m 2.4   5.4
Operating pressure with cleaning brush max.	bar   MPa 40   4
Water output max.	l/min 30



### Nozzle holder with pressure adjustment

NEW

Ord.no. without nozzle\*\*

122110-XXX



### Cleaning brush transverse

EXPERT TIP

- Natural bristles
- Connection M22x1.5 AG

Ord.no.

410500

\*\* High-pressure nozzle must be ordered separately.





# SPECIAL ACCESSORIES

128060



### Cleaning brush transverse

- Natural bristles
- Brush head LxW: 240x90 mm
- with anti-twist protection (500 mm)

Pipe length	mm	Ord.no.
500		<b>128060</b>
750		<b>128061</b>

128062



### Cleaning brush transverse

- Natural bristles
- Brush head LxW: 240x90 mm
- with grip plates

Pipe length	mm	Ord.no.
1000		<b>128062</b>
1250		<b>128063</b>
1500		<b>128064</b>



optional

### Cleaning brush flat

- Plastic bristles

Ord.no.	<b>41073</b>
+ Adapter D12	<b>12441</b>
Inlet	M22x1.5 AG
Dimensions LxW mm	180x65

410506



### Rotating washing brush

- Natural bristles
- Brush head Ø: 180 mm
- with anti-twist protection

Pipe length	mm	Ord.no.
342		<b>410506</b>

410507



### Rotating washing brush

- Natural bristles
- Brush head Ø: 180 mm
- with grip plates

Pipe length	mm	Ord.no.
1000		<b>410507</b>
1250		<b>410508</b>
1500		<b>410509</b>



### Spray guard

- For cleaning surfaces without splashing water
- Applicable for all washing lances

Ord.no.	<b>132600</b>
Dimensions LxW mm	285x190

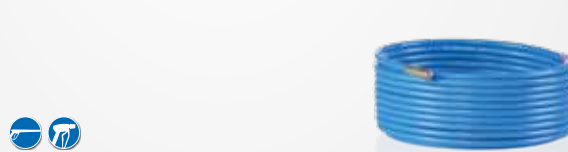


optional

### Sandblaster set (wet blasting)

- for blasting sandstone and facades
- with hose and intake lance

Ord.no.	<b>41068</b>
+ Adapter D12	<b>12441</b>
Inlet	M22x1.5 AG
Operating pressure min. bar   MPa	130   13
Water output min. l/min	10
for blasting material mm	0.2 - 2.0
Nozzle size	● 055



### Pipe cleaning hose with nozzle

- Operating pressure max.: 200 bar | 20 MPa
- Nozzle size without front bore: KN 055
- other nozzles on request**
- Nozzle size with front bore: KNF 055

Length	m	Ord.no. without front bore	Ord.no. with front bore
10		<b>12550</b>	<b>12550-F</b>
15		<b>125501</b>	<b>125501-F</b>
20		<b>125502</b>	<b>125502-F</b>
25		<b>125503</b>	<b>125503-F</b>
30		<b>125504</b>	<b>125504-F</b>



#### WITHOUT FRONT BORE

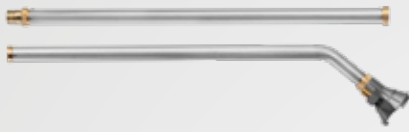
3 jets to the rear



#### WITH FRONT BORE

3 jets to the rear  
1 jet to the front





### Sludge sucker

Extraction of mud from pools and ponds  
 ■ For high-pressure cleaners from 10 l/min

Ord.no.	41791	
Inlet	M22x1.5 AG	
Length	m	2
Operating pressure max.	bar   MPa	250   25
Water output max.	l/min	20
Suction height max.	m	3
Suction power at 130 bar / 220 bar	l/h	10000   17500
Nozzle size (factory fitted)	● 055	



### Sludge sucker

Extraction of mud from pools and ponds  
 ■ For high-pressure cleaners from 10 l/min  
 ■ hose diameter 1 1/2 "

Ord.no.	41104	
Inlet	M22x1.5 AG	
Hose length	m	3.8
Operating pressure max.	bar   MPa	250   25
Water output max.	l/min	20
Suction height max.	m	3
Suction power at 130 bar / 220 bar	l/h	10000   17500
Nozzle size (factory fitted)	● 055	



### Pool cleaner attachment

Attachment for stainless steel mud extractor

Ord.no.	418030	
Inlet	M22x1.5 AG	
Dimensions L	mm	320
Operating pressure max.	bar   MPa	250   25
Water output max.	l/min	20
Suction height max.	m	3
Suction power at 130 bar / 220 bar	l/h	10000   17500
Nozzle size as standard	● 055	



### Suction hose with suction filter

■ For high-pressure cleaners with a motor speed of 1400 rpm and a water output of at least 10 l/min  
 ■ with return valve

Ord.no.	150383	
Inlet	3/4" IG	
Hose length	m	3



133003

133201

### Water inlet filter

■ Inlet and outlet in brass execution, except article: 13310

Inlet	Outlet	Ord.no.
3/4" AG (Plastic connection)	3/4" IG (Screw connection)	13310
3/4" AG	3/4" IG (Screw connection)	133003
Quick release coupling with claws (GEKA)	Quick release coupling with claws (GEKA)	133005
3/4" AG	3/4" IG (Screw connection)	133201



# STAINLESS STEEL TABLE - PERFECT FOR WS/WSC-RP PRESSURE WASHERS

**NEW**

The stainless steel table has been specially designed for WS/WSC-RP devices and is characterised by its high stability, comfort and flexibility. A particularly practical feature is that no complex drilling in the wall is required, enabling simple and quick installation. Thanks to the rustproof stainless steel, the table is ideal for use in wet areas.

## BRACKETS FOR RUBBER BUFFERS

Serve to secure the pressure washers easily and safely. At the same time, they dampen vibrations.



## MOUNTING HOLES

specially designed for automatic hose reel and lance quiver bottom



## ADJUSTABLE FEET

Height-adjustable, compensate for uneven surfaces and ensure a secure footing

## STAINLESS STEEL TABLE

Material	Stainless steel
Dimensions L x W x H	77   58   73
Ord.no.	16206



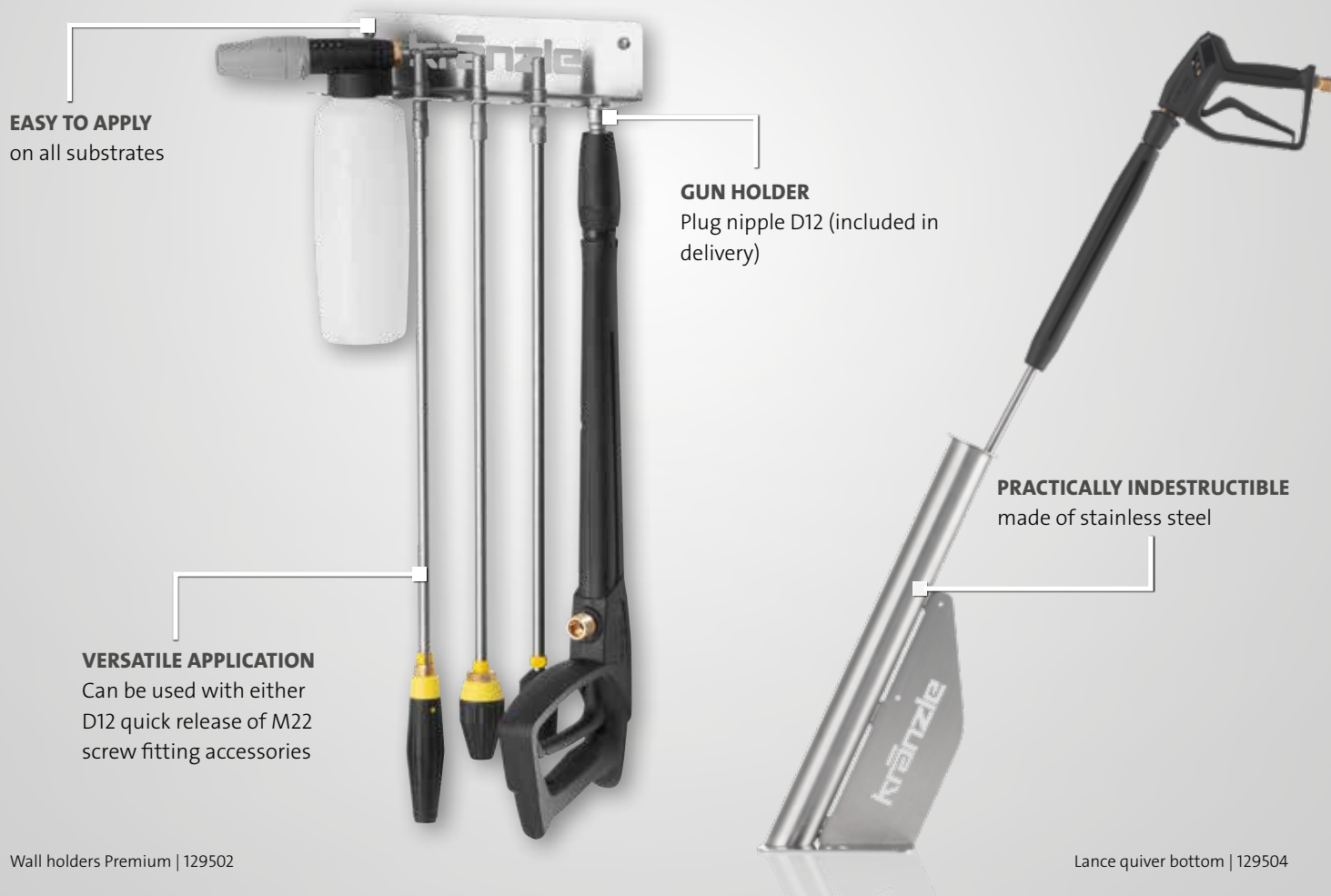




# EVERYTHING IN PLACE

## ACCESSORIES ORGANISER

The search is over: with the correct accessories, Kränzle gives you the versatility to clean even the most difficult jobs. To ensure that all utensils are always within reach and that you don't lose track of them, Kränzle offers a variety of practical storage solutions. These are compatible with the complete range of Kränzle accessories - also for accessories with M22 threaded screw connection.



## WALL HOLDERS



### Wall holders Lances

Space-saving storage of up to seven lances and washing brushes  
■ incl. gun holder D12

<b>Ord.no.</b>	<b>129500</b>
Dimensions LxWxH mm	300x50x70



### Wall holders Foam lance

Large trough for practical attachment of the Foam lance

<b>Ord.no.</b>	<b>129501</b>
Dimensions LxWxH mm	80x70x70



### Wall holders Premium

For the storage of up to four cleaning lances and one foam lance  
■ incl. gun holder D12

<b>Ord.no.</b>	<b>129502</b>
Dimensions LxWxH mm	300x70x70

## ACCESSORIES

# LANCE HOLDER | HOSE REELS



### Lance quiver bottom

For floor mounting, with leakage connection  
 ■ Suitable for stowing 2 lances

<b>Ord.no.</b>	<b>129504</b>	
Pipe length	mm	590
Ø	mm	55



### Lance quiver wall

For wall mounting  
 ■ not suitable for lances with turbo killer

<b>Ord.no.</b>	<b>129505</b>	
Pipe length	mm	590
Ø	mm	55



### Retrofit parts for automatic hose reel

■ therm-RP, therm-1, therm 1017

<b>Ord.no.</b>	<b>48950</b>	
HP hose	m	20 (DN8)



### Automatic hose reel

■ incl. connection hose 2 m

<b>Ord.no.</b>	<b>43855</b>	
HP hose	m	20 (DN8)



### Automatic hose reel stainless steel

■ incl. connection hose 2 m

incl. HP hose	m	<b>Ord.no.</b>
20 (DN8)		<b>412681</b>
30 (DN8)		<b>412691</b>

## ADAPTER



### Conversion kit - flow monitor

For leakage protection in the pipe network.  
 Suitable for non-monitored areas

<b>Ord.no.</b>	<b>126342</b>	
Flow rate	l/min	4



### Pipe ventilation with non-return valve

Installation between device and drinking water pipe  
 ■ with return valve

<b>Ord.no.</b>	<b>410164</b>	
Inlet	3/4" IG	
Outlet	3/4" AG	



44192

### Chimney adapter

For indoor installations  
 ■ for all oil-heated therm-Series  
 ■ Ø 200 mm

Length	mm	<b>Ord.no.</b>
200		<b>44192</b>
385		<b>441921</b>

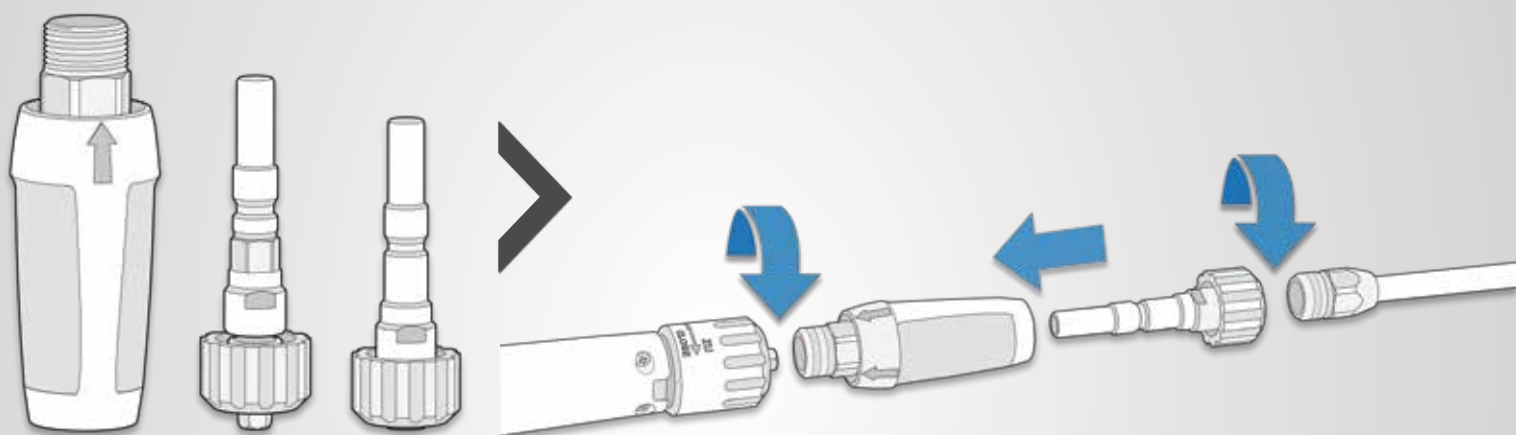
# AS SAFE AS EVER,

# AS FAST AS NEVER BEFORE



## CONVERSION TO PLUG-IN SYSTEM D12

The threaded connection has always been a guarantee for the reliable connection between safety shut-off gun and lances. With the innovative quick-change plug-in system D12, we have further developed this proven technology: The plug-in coupling combines the usual safety with additional comfort. By simply plugging in, the lances can be changed more conveniently and quickly than ever before.

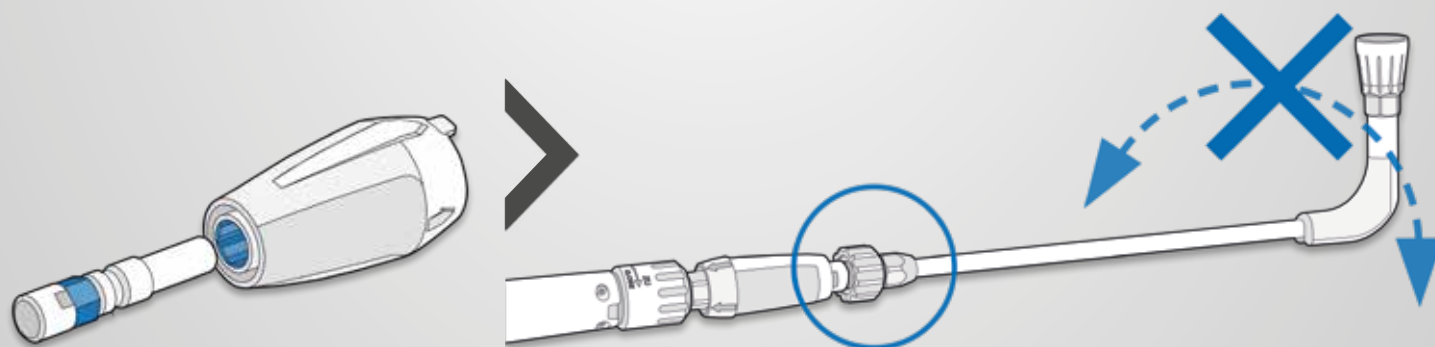


### CONVERSION KIT | Ord.no. 13455

- Attachment plug-in system D12
- Plug nipple D12 with anti-twist protection
- Plug nipple D12 without anti-twist protection

### CONVERSION MADE EASY

- Screw the attachment plug-in system onto the trigger gun M22
- Screw the accessories with the M22 threaded screw onto the plug nipple
- Snap the plug nipple into the attachment plug-in system



### HEXAGONAL COUPLING

The external hexagon of the plug nipple with anti-twist protection fits perfectly into the internal hexagon of the Attachment plug-in system D12.

### SECURED AGAINST TWISTING

Thanks to the plug-in nipple with hexagonal coupling, lances and accessories can be locked in six different positions. This makes unintentionally twisted accessories a thing of the past.



# CONVERSION TO PLUG-IN SYSTEM D12



### Conversion kit plug-in system D12

For converting trigger gun with safety catch and accessories with thread screw M22 to quick-change plug-in system D12.

Attachment plug-in system	Adapter 1	Adapter 2	Ord.no.
M22x1,5 AG ▶ D12	Plug nipple D12 without anti-twist protection	Plug nipple D12 with anti-twist protection	<b>13455</b>



124415

12440

### Adapter Thread screw M22 ▶ plug-in system D12

For use of the accessories with thread screw M22 for trigger gun with safety catch with plug-in system D12

Inlet	Outlet	Anti-twist protection	Length mm	Ord.no.
Plug nipple D12	M22x1,5 IG	–	100	<b>12441</b>
Plug nipple D12	M22x1,5 IG	●	100	<b>124415</b>
Plug nipple D12	M22x1,5 IG	–	400 grip plates	<b>12440</b>



### Attachment plug-in system D12

For converting trigger gun with safety catch to quick-change plug-in system D12.

Ord.no.	12443
Outlet	D12



## ACCESSORIES THREAD SCREW M22

# FOR DEVICES PRODUCED BEFORE 2020

Since 2020, all high-pressure cleaners will be equipped exclusively with the innovative quick-change plug-in system D12. The previous cleaning accessories with threaded fittings for existing Kränzle units are of course still available.

► **DOWNLOAD: ACCESSORIES CATALOGUE M22**

Scan QR code



# HIGH PRESSURE HOSES



Standard



NoM

## Steel braided high-pressure hose

■ Inlet | Outlet: M22x1.5 IG

■ Rotating screw connection

■ Bend protection

*Other versions on request*

Length	m	Steel braided layers	SN	Operating pressure	bar   MPa	Temperature max.	°C	Ord.no. Standard	Ord.no. NoM
10 (DN6)		1		210   21		100		<b>43416</b>	<b>434162</b>
20 (DN6)		1		210   21		100		<b>434161</b>	<b>434163</b>
10 (DN8)		1		230   23		150		<b>44878</b>	–
10 (DN8)		2		400   40		150		<b>41081</b>	<b>410811</b>
15 (DN8)		1		230   23		150		<b>44879</b>	–
15 (DN8)		2		400   40		150		–	<b>410821</b>
25 (DN8)		2		400   40		150		<b>41084</b>	<b>410841</b>
30 (DN8)		2		400   40		150		<b>41080</b>	<b>410801</b>



Standard



NoM

## Replacement hose - for pressure washers with hose reel

■ Outlet: M22x1.5 IG

■ Rotating screw connection

■ Bend protection

*Other versions on request*

Device series	Length	m	Steel braided layers	SN	Operating pressure	bar   MPa	Temperature max.	°C	Ord.no. Standard	Ord.no. NoM
K 1050	12 (DN6)		1		210   21		100		<b>49116</b>	–
X-Series	15 (DN6)		1		210   21		100		<b>498000</b>	<b>480151</b>
K 1154, K 1152, K 2000	15 (DN6)		1		210   21		100		<b>48015</b>	<b>480151</b>
Profi	15 (DN6)		1		210   21		100		<b>43829</b>	<b>438291</b>
small quadro	15 (DN6)		1		210   21		100		<b>40170</b>	<b>401701</b>
quadro 599/799	20 (DN6)		1		210   21		100		<b>434161</b>	<b>434163</b>
quadro 899	15 (DN8)		1		210   21		100		<b>44879</b>	<b>410821</b>
large quadro, Profi-Jet, B, Primus AT	20 (DN8)		2		400   40		150		<b>41083</b>	<b>410831</b>
therm C, therm CA	15 (DN8)		1 / NoM: 2		210   21 / NoM: 400   40		150		<b>44879</b>	<b>410821</b>
LX-RP, therm-RP, therm 1, e-therm, Primus, Primus-RP	20 (DN8)		2		400   40		150		<b>443812</b>	<b>443813</b>
therm-RP 900 AT	15 (DN8)		2		400   40		150		<b>44876</b>	–



## Connecting hose

■ Inlet | Outlet: M22x1.5 IG

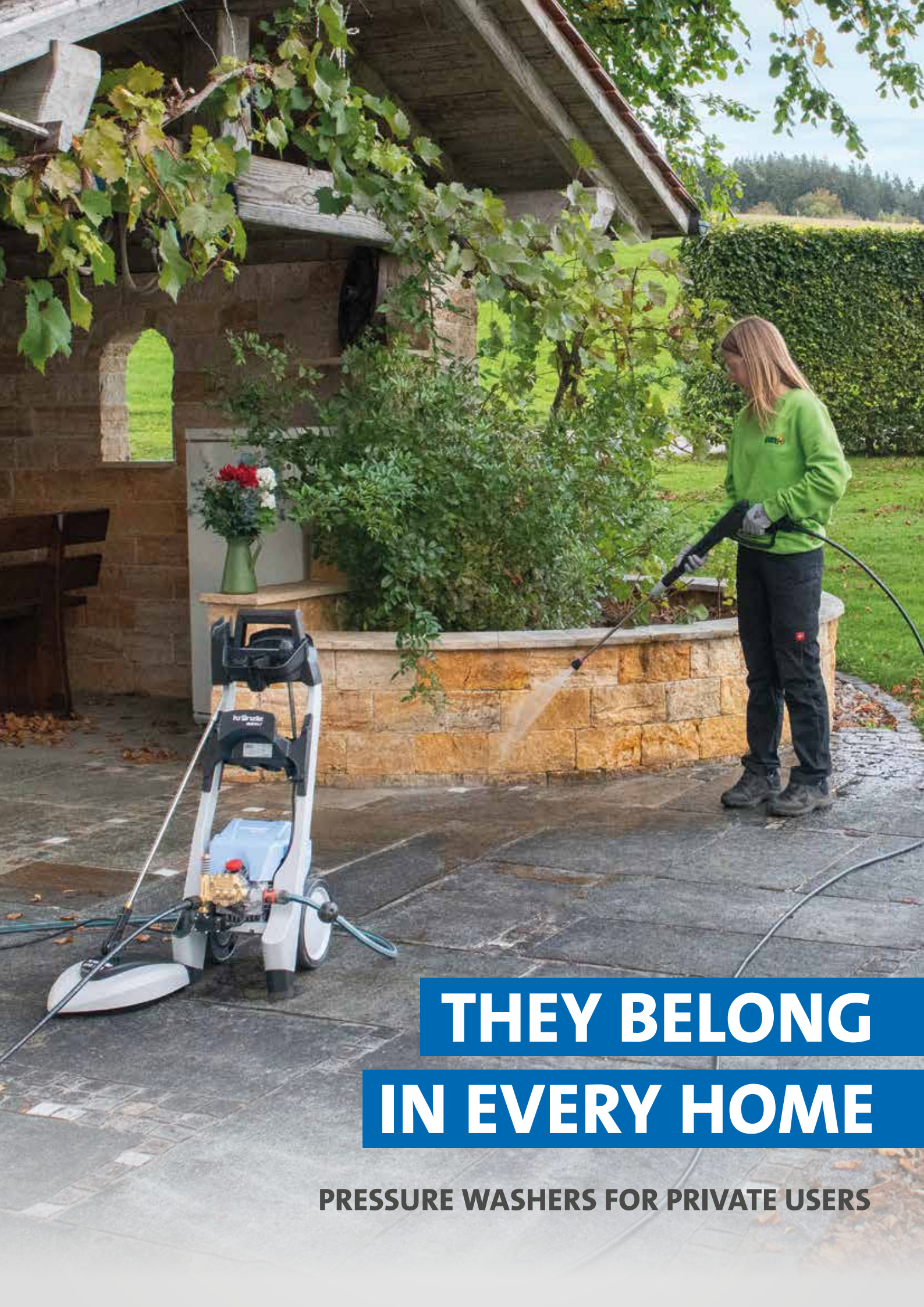
Length	m	Steel braided layers	SN	Operating pressure	bar   MPa	Ord.no.
1 (DN8)		2		400   40		<b>41265</b>
2 (DN8)		2		400   40		<b>412651</b>



## Hose connector / joining piece

Ord.no.	13286
Inlet	M22x1.5 AG
Outlet	M22x1.5 AG





**THEY BELONG  
IN EVERY HOME**

**PRESSURE WASHERS FOR PRIVATE USERS**



PRESSURE WASHERS FOR PRIVATE USERS

## EXCEPTIONAL QUALITY FOR YOUR HOME

High-quality technology attractively packaged: Kränzle offers the Quickly and the K 1050-Series for demanding domestic tasks. The devices are characterised on the outside by a shapely and compact housing, in the inside are the sophisticated features and quality materials of our professional cleaning equipment. A well thought out range of accessories makes the cleaners real all-rounders.





## TECHNICAL HIGHLIGHTS



### QUICK RELEASE PLUG-IN SYSTEM D10

Sophisticated, fast and reliable: The quick release plug-in system D10 with hardened stainless steel components ensures simple and safe connection of the safety shut-off gun with the lance.



### INTELLIGENT SOLUTIONS FOR DOMESTIC USERS

First-class and functional: Kränzle pressure washers can also be used for private users who expect only the best. Many of the components from the professional range for example the Brass pump head, stainless-steel plungers and roto-moulded chassis are used in the K 1050 range.



### TOTAL-STOP SYSTEM

Full control: The Total stop system turns the motor on when the trigger gun is engaged and off when the trigger is released. This makes the machine more efficient and economical with less noise and reduced wear.



### HOSE REEL

Practical and comfortable: After washing, the high-pressure hose can neatly and safely stored away thanks to the heavy-duty hose drum and crank handle.



### COMPACT DESIGN

The ideal union of form and function: Not only for the performance features, but also in terms of mobility Kränzle has thought about the handling. The devices are easy to transport and thanks to the compact Housing shape it is neat and space-saving.



### MANY POSSIBILITIES OF USE

No application without a Kränzle: Thanks to a wide range of accessories the powerful pressure washers are equipped in such a way that they will be available for almost every Cleaning task in and around the house.

# Quickly



### ACCESSORIES STORAGE

for convenient stowage of the accessories and the power cable

### TRAY FOR WORK BREAKS

clever holder for the high-pressure gun during work breaks

### PRACTICAL HOSE HOLDER

for tidy storage of the high-pressure hose

### INCLUDING FLOOR CLEANER

#### ROUND CLEANER UFO

for simple and efficient cleaning of driveways, terraces and co

### OFF-ROAD CAPABILITY

#### AND STABILITY

robust chassis for easy transport and high stability


### TOTALSTOP-SYSTEM

switches off the pump if the high-pressure gun is not operated during work breaks



► **ACCESSORIES** | page 106

### EQUIPMENT

 Quick release plug-in system D10

- Kränzle axial pump
- Total-stop system
- Water inlet filter
- High-pressure hose







<b>MODEL</b>	<b>Quickly</b>
<b>Ord.no.</b>	<b>497500</b>

**TECHNICAL SPECIFICATIONS**

Operating pressure	bar   MPa	130   13
Water output	l/min   l/h	6.3   380
Admissible overpressure	bar   MPa	145   14.5
Motor speed	Rpm	2800
Connection	V   ~   Hz   A	230   1   50   7.9
Power intake   Power output	kW	1.8   1.35
Power supply cable	m	5
Plug		Schuko
Dimensions L x W x H	mm	420   285   900
Weight	kg	20

**EQUIPMENT**

High-pressure hose	m   Ord.no.	8 (DN6)   497070
Trigger gun with safety catch	Model   Ord.no.	Starlet 4   12520
Lance with flat-jet nozzle	Nozzle   Ord.no.	● 028   12900-028
Lance with Dirtkiller	Nozzle   Ord.no.	● 028   42403-028
Round Cleaner UFO	Ø mm   Ord.no.	260   41870
Water inlet filter	Ord.no.	13311



## K 1050-Series



### ROTO-MOULD CHASSIS

practically indestructible plastic housing

### CONVENIENT INTEGRATED HOSE REEL (TST)

space-saving storage of the high-pressure hose - with foldable crank

### ACCESSORY STORAGE

neat storage for high pressure gun and lances

### CARRY HANDLE

portable and space-saving compact design

### OFF-ROAD CAPABILITY AND STABILITY


robust chassis for easy transport and high stability



K 1050 TST | 495101  
K 1050 P | 49501

► **ACCESSORIES** | page 106

#### EQUIPMENT

-  Quick release plug-in system D10
- Kränzle axial pump
- Total-stop system
- Water inlet filter

#### MODELS

- K 1050 P - portable
- K 1050 TS - mobile with hose support
- K 1050 TST - mobile with hose drum





MODEL	K 1050 P	K 1050 TS	K 1050 TST
Ord.no.	49501	495051	495101

**TECHNICAL SPECIFICATIONS**

Model		portable	with hose holder	with hose drum
Operating pressure	bar   MPa	130   13	130   13	130   13
Water output	l/min   l/h	7.5   450	7.5   450	7.5   450
Admissible overpressure	bar   MPa	160   16	160   16	160   16
Motor speed	Rpm	2800	2800	2800
Connection	V   ~   Hz   A	230   1   50   9.6	230   1   50   9.6	230   1   50   9.6
Power intake   Power output	kW	2.2   1.65	2.2   1.65	2.2   1.65
Power supply cable	m	5	5	5
Plug		Schuko	Schuko	Schuko
Dimensions L x W x H	mm	390   290   370	340   350   860	340   350   860
Weight	kg	21	23	26

**EQUIPMENT**

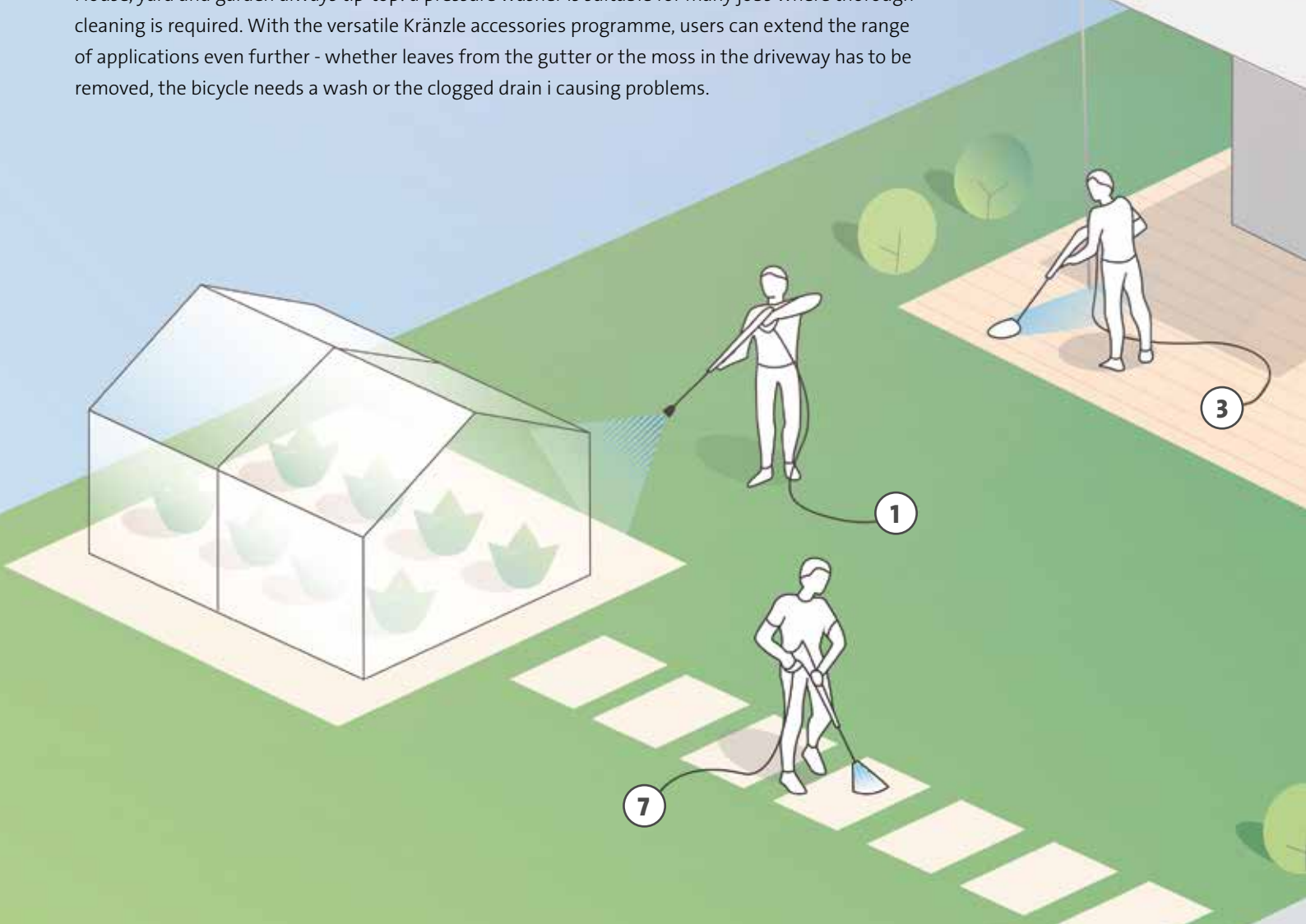
High-pressure hose	m   Ord.no.	8 (DN6)   410541	8 (DN6)   410541	12 (DN6)   49116
Trigger gun with safety catch	Model   Ord.no.	Starlet 4   12520	Starlet 4   12520	Starlet 4   12520
Lance with flat-jet nozzle	Nozzle   Ord.no.	○ 03   12900-03	○ 03   12900-03	○ 03   12900-03
Lance with Dirtkiller	Nozzle   Ord.no.	optional	○ 03   42403-03	○ 03   42403-03
Water inlet filter	Ord.no.	13311	13311	13311





## OPTIMALLY EQUIPPED FOR EVERY TASK

House, yard and garden always tip-top: a pressure washer is suitable for many jobs where thorough cleaning is required. With the versatile Kränzle accessories programme, users can extend the range of applications even further - whether leaves from the gutter or the moss in the driveway has to be removed, the bicycle needs a wash or the clogged drain causing problems.



## TECHNICAL HIGHLIGHTS

### QUICK RELEASE PLUG-IN SYSTEM D10

Sophisticated, fast and reliable: The quick release plug-in system D10 with hardened stainless steel components ensures simple and safe connection of the safety shut-off gun with the lance.

### ANTI-TWIST PROTECTION

Accessories equipped with an anti-rotation device can be locked in different positions. This prevents the accessories from twisting unintentionally and allows them to be guided by moving the gun.





#### 1. ROTATING DIRTKILLER NOZZLE:

Generates a rotating spot jet that removes even the most stubborn dirt

#### 2. LANCE EXTENSION:

Makes ladder and co. unnecessary. For easy access to hard-to-reach places

#### 3. ROUND CLEANER UFO:

With two rotating high-pressure nozzles for easy and efficient cleaning of larger areas such as driveways or patios lub tarasy

#### 4. ROTATING WASHING BRUSH:

The soft bristles of the washing brush allow for a gentle cleaning of sensitive surfaces

#### 5. PIPE CLEANING HOSE:

Hose with 10 metre length for easy access to and effective removal of blockages in pipes and drains

#### 6. FOAM LANCE:

Produces effective foam to dissolve coarse soiling (combined with Kränzle Neutral)

#### 7. SPLASH GUARD:

Transparent attachment that encloses the high-pressure jet and protects the surroundings from splashing water

# ACCESSORIES | QUICK RELEASE PLUG-IN SYSTEM D10

## FOR K 1050-SERIES AND QUICKLY



### Starlet 4

For K 1050-Serie and Quickly  
 ■ Inlet: M22x1.5 AG  
 ■ Outlet: Plug-in connection D10

<b>Ord.no.</b>	<b>12520</b>
----------------	--------------



12900-03

### Lance with flat jet nozzle

■ For normal dirt

Length	mm	Nozzle size	Ord.no.
400		● 028	<b>12900-028</b>
400		○ 03	<b>12900-03</b>



42403-03

### Dirtkiller lance

■ For stubborn dirt

Length	mm	Nozzle size	Ord.no.
400		● 028	<b>42403-028</b>
400		○ 03	<b>42403-03</b>



12905-M2003

### Lance with regulating nozzle **NEW**

Adjustable working pressure, high- and low-pressure

Length	mm	Nozzle size	Ord.no.
400		● 028	<b>12905-M20028</b>
400		○ 03	<b>12905-M2003</b>



### Lance extension

■ Anti-twist protection

<b>Ord.no.</b>	<b>12870</b>
Length	mm 400



### Round Cleaner UFO

Floor Cleaner for small and medium-sized surfaces

<b>Ord.no.</b>	<b>41870</b>
∅	mm 260



### Rotating washing brush

■ Anti-twist protection

<b>Ord.no.</b>	<b>12800</b>
Brush head ∅	mm 180
Pipe length	mm 210



### Spray guard

■ Applicable for all washing lances

<b>Ord.no.</b>	<b>132600</b>
Dimensions LxW	mm 285x190



### Pipe cleaning hose

■ Removes stubborn pipe blockages

<b>Ord.no.</b>	<b>12850</b>
Length	m 10



412710

412711

### Kränzle Neutral

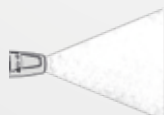
Universal cleaner for removal of strong contaminations

■ pH value\*\*: 8.5  
 ■ Mixing ratio: 1:3

Container	Liter	Ord.no.
1		<b>412710</b>
5		<b>412711</b>



### SPOT JET



### FLAT-JET



125312

### Foam lance

■ Produces dense, long-lasting foam

<b>Ord.no.</b> 1 Liter	<b>135302</b>
<b>Ord.no.</b> 2 Liter	<b>135312</b>



\*\*pH value: undiluted. It is recommended to test the cleaning agent on the surface to be cleaned before starting.





**BRILLIANT RESULTS  
EVEN WITHOUT  
WATERPOWER**

**VACUUM CLEANERS | SWEEPERS**

## VACUUM CLEANERS

# VERSATILE, POWERFUL AND COMFORTABLE

From the construction site to the salesroom to the workshop. The Ventos wet and dry vacuum cleaner, with integrated tool socket, is ideally equipped for all cleaning tasks. An automatic start-up, an automatic switchoff in case of the suction of liquids and the large drain plug ensure safe operation. The extra-long power cable and the suction hose offer a large action radius, and a wide range of accessories enables a thorough work.



### TABLE OF CONTENTS

Ventos L-Series .....	110-111
Accessories Ventos L-Series .....	112-113
Ventos 12-Series .....	114-115
Accessories Ventos 12-Series .....	115

### KEY INDUSTRIES





# THE FILTER CLEANING MAKES THE DIFFERENCE



## MANUAL FILTER CLEANING – VENTOS PC-MODELS

The manual Push-Clean feature of the Ventos PC ensures constant suction power and optimum cleaning performance. After pressing the push button, the airflow is diverted through the dust filter and it is cleaned in no time. The dirt simply falls into the collection container or the inserted dust bag, and the Ventos regains its full suction power.

## AUTOMATIC FILTER CLEANING – VENTOS AC-MODELS

The Automatic-Clean filter cleaning function of the Ventos AC offers added convenience. Thanks to an additional rotary knob, it is possible to set the intervals at which an automatically triggered air blast cleans the flat pleated filter. This enables long filter service life and ensures uninterrupted and continuous operation at full suction power.

## TECHNICAL HIGHLIGHTS



### CONTROL PANEL

With the Ventos series, the user always has all functions in view. The control panel allows infinitely variable regulation of the suction power.

In the case of the Ventos AC, the control panel also allows to set the interval for automatic filter cleaning.



### AUTOMATIC START-UP

An integrated socket allows the connection of power tools (max. 2200 W).

The automatic start-up function switches the vacuum cleaner on when the tool is switched on, and the run-on function ensures that the suction hose is completely emptied after the tool is switched off.



### PRINCIPLE OF ARRANGEMENT

This means that the accessories are always within reach. Power cable and suction hose can be spooled and stowed easily. A semicircular holder on the top, into which the suction tube can be inserted, allows the industrial vacuum cleaner to be carried comfortably by holding the suction tube securely in the recessed grip.



# Ventos L-Series



### PRACTICAL

Handle with a holder for the suction tube for safe transport

### COMFORTABLE

Socket outlet for power tools, with automatic start-up, automatic switch-off and overrun function

### TIDY

Space-saving stowage of pipes, hose, cable and accessories

### ROBUST

All-terrain chassis for mobility and high stability

### SIMPLE

Drain screw for a problem-free draining of liquids after the sucking up of liquids

### AS STANDARD

Extensive accessories to accomplish different cleaning tasks



Ventos 32 L/AC | 580020

► **ACCESSORIES** | page 112-113



### EQUIPMENT

- Ventos PC: Push-Clean filter cleaning | Ventos AC: Automatic-Clean filter cleaning
- Wet and dry vacuuming
- integrated automatic on/off switch
- Mains connection of power tool (max. 2200 W)
- Container/filter bag volume sensor with LED display
- Storage space – for storing tools or work materials



**CHOOSE FROM TWO DIFFERENT  
CONTAINER SIZES**

MODEL	Ventos 32 L/PC	Ventos 42 L/PC	Ventos 32 L/AC	Ventos 42 L/AC
Ord.no.	<b>580000</b>	<b>580040</b>	<b>580020</b>	<b>580060</b>

#### TECHNICAL SPECIFICATIONS

Dust class		L	L	L	L
Filter cleaning		Manual	Manual	Automatic	Automatic
Volumetric flow rate turbine max	l/min	4500	4500	4500	4500
Depression turbine max	kPa   mbar	25   250	25   250	25   250	25   250
Connection	V   ~   Hz   A	230   1   50   16	230   1   50   16	230   1   50   16	230   1   50   16
Power consumption	W	1200	1200	1200	1200
Container volume	l	30	40	30	40
Filling volume water intake	l	30	40	30	40
Sound pressure level at workplace	db (A)	68.3	68.3	68.3	68.3
Protection class		IPx4	IPx4	IPx4	IPx4
Power supply cable	m	7.5	7.5	7.5	7.5
Plug		Schuko	Schuko	Schuko	Schuko
Dimensions L x W x H	mm	590   365   565	590   365   645	590   365   565	590   365   645
Weight	kg	18.5	19	19.3	19.8

#### EQUIPMENT

Dust bag	Quantity   Ord.no.	5   454511	5   454521	5   454511	5   454521
Disposal bag	Quantity   Ord.no.	1   454551	1   454561	1   454551	1   454561
Folded filter	Dust class   Ord.no.	L   457079	L   457079	L   457079	L   457079
Suction hose antistatic	m   Ord.no.	4 (DN 32)   452825	4 (DN 32)   452825	4 (DN 32)   452825	4 (DN 32)   452825
Hand tube	Ord.no.	584031	584031	584031	584031
Extension tube	Quantity   Ord.no.	2   584032	2   584032	2   584032	2   584032
Floor nozzle	Ord.no.	584035	584035	584035	584035
Brush nozzle	Ord.no.	584008	584008	584008	584008
Joint nozzle	Ord.no.	584023	584023	584023	584023
Tool adapter	Ord.no.	584112	584112	584112	584112



# THE RIGHT EQUIPMENT FOR EVERY REQUIREMENT

Whether you need to clean hard-to-reach areas or use it on large surfaces: With the accessories included as standard, the Ventos-Series is already optimally equipped for the most common cleaning tasks. Our optionally available range of special accessories also meets the highest requirements and particularly demanding tasks. **Accessories with a connection diameter of 35 are compatible with all Ventos 32 and Ventos 42 models.**



### Dust bag

■ tear-resistant fleece filter bag for dry vacuuming

Ord.no.	454511	454521
Quantity	5	5
Filling volume Litres	30	40



### Disposal bag

■ for Ventos PC and Ventos AC

Ord.no.	454551	454561
Quantity	5	5
Filling volume Litres	30	40



### Folded filter

■ for Ventos PC and Ventos AC

Ord.no.	457079
Dust class	L
Dimensions L x W mm	240   140



### Suction hose

■ antistatic

Ord.no.	452825
Dimensions L m	4 (DN32)
Connection Ø mm	45



### Hand tube

■ with air slide

Ord.no.	584031
Dimensions L mm	320
Connection Ø mm	45   35



### Extension tube

■ Galvanised steel

Ord.no.	584032
Dimensions L mm	2 x 500
Connection Ø mm	35



### Floor nozzle

for wet and dry vacuuming

Ord.no.	584035
Dimensions L mm	360
Connection Ø mm	35



### Brush nozzle

for simultaneous vacuuming and brushing

Ord.no.	584008
Brush Ø mm	70
Connection Ø mm	35



### Joint nozzle

for use in narrow places

Ord.no.	584023
Dimensions L mm	300
Connection Ø mm	35



### Tool adapter

for suction of power tools

Ord.no.	584112
Dimensions L mm	120
Connection Ø mm	45   35

### USE OF POWER TOOLS

The tool adapter or the optionally available tool suction hose are compatible with almost all common power tool brands. Dust and flying chips are effectively extracted, which guarantees comfortable as well as dust-free working.

**Tool connection:** Ø 25 mm







### Floor nozzle

- made of aluminium, light and robust
- with integrated brush and rubber strips

<b>Ord.no.</b>	<b>584028</b>
Dimensions L mm	450
Connection Ø mm	35



### Turbo brush

- for the thorough cleaning of carpets
- with driven brush roller

<b>Ord.no.</b>	<b>584024</b>
Dimensions L mm	280
Connection Ø mm	35



### Carpet nozzle

- for carpets and smooth surfaces
- Adaptable to the respective surface

<b>Ord.no.</b>	<b>584018</b>
Dimensions L mm	295
Connection Ø mm	35



### Tool-Suction hose

for suction of power tools

<b>Ord.no.</b>	<b>452828</b>
Dimensions L m	4 (DN32)
Connection Ø mm	45   35



### Upholstery nozzle

for cleaning textile surfaces

<b>Ord.no.</b>	<b>584009</b>
Dimensions L mm	145
Connection Ø mm	35



### Wide nozzle

for use in narrow places

<b>Ord.no.</b>	<b>584012</b>
Dimensions L mm	250
Connection Ø mm	45



### Universal brush nozzle

for simultaneous vacuuming and brushing

<b>Ord.no.</b>	<b>584017</b>
Dimensions L mm	230
Connection Ø mm	35



### Suction brush

gentle pet care without tiresome shedding

<b>Ord.no.</b>	<b>584020</b>
Dimensions L mm	235
Connection Ø mm	35



### Suction currycomb

removes gross impurities from animal skins

<b>Ord.no.</b>	<b>584019</b>
Dimensions L mm	240
Connection Ø mm	35



### Folded filter Wet + Dry

- for Ventos PC and Ventos AC

<b>Ord.no.</b>	<b>457120</b>
Dust class	M, L
Dimensions L x W mm	240   140

## ACCESSORIES FOR OLDER VENTOS MODELS



### Dust bag

- for Ventos 20 E/L

<b>Ord.no.</b>	<b>454400</b>
Quantity	5
Filling volume Litres	20



### Dust bag

- for Ventos 30 E/L

<b>Ord.no.</b>	<b>454401</b>
Quantity	5
Filling volume Litres	30



### Filter

- for Ventos 20 E/L, Ventos 30 E/L

<b>Ord.no.</b>	<b>454403</b>
Dust class	L
Ø mm	280

# Ventos 12-Series



**NEW**

**HANDGRIP**  
for comfortable and save transport

**TIDY**  
Space-saving stowage of pipes, hose, cable and accessories

**CASTOR WHEELS**  
make the vacuum cleaner easier to manoeuvre

**TELESCOPIC SUCTION TUBE**  
adjustable between 59 and 97 cm working length

**IMPACT PROTECTION**  
protects against damage



Ventos 12 | 570000

► **ACCESSORIES** | page 115



## EQUIPMENT

- Compact, light and manoeuvrable
- Dust bag full indicator
- Large dust collection container
- Pluggable power cord
- Optional: HEPA cartridge filter (Ventos 12 HE)




MODEL	Ventos 12	Ventos 12 HE
Ord.no.	570000	570010

#### TECHNICAL SPECIFICATIONS

Volumetric flow rate turbine max	l/min	3400	2800
Depression turbine max	kPa   mbar	25   250	21.5   215
Connection	V   ~   Hz   A	230   1   50   4	230   1   50   4
Power consumption	W	900	650
Container volume	l	12	12
Filter		cartridge filter	HEPA cartridge filter
Sound pressure level at workplace	db (A)	59	65
Power supply cable	m	15	15
Plug		Schuko	Schuko
Dimensions L x W x H	mm	350   450   375	350   450   375
Weight (without accessories)	kg	7	7

#### EQUIPMENT

Fleece filter bag	Quantity   Ord.no.	2   571003	2   571003
Cartridge filter	Ord.no.	571001	571002   HEPA 
Suction hose	m   Ord.no.	2.5   571004	2.5   571004
Aluminium telescopic tube	Ord.no.	571005	571005
Floor nozzle	Ord.no.	571006	571006
Combination floor nozzle	Ord.no.	571007	571007
Suction brush	Ord.no.	571008	571008
Joint nozzle	Ord.no.	571009	571009
Upholstery nozzle	Ord.no.	571010	571010

## ACCESSORIES FOR VENTOS 12 MODELS



Power brush			
Quantity	1 piece	Order no.	571012
The motorised brush roller removes even the most stubborn dirt from carpets			



Paper filter bag			
Quantity	10 pieces	Order no.	571000

Fleece filter bag			
Quantity	10 pieces	Order no.	571003



Telescopic tube Plus			
Quantity	1 piece	Order no.	571011
Extendable up to 1.35 m, for hard-to-reach places			



Cartridge filter			
Quantity	1 piece	Order no.	571001

HEPA-Cartridge filter			
Quantity	 1 piece	Order no.	571002





## KRÄNZLE SWEEPERS

# BEST SWEEP-ACTION CLEANING RESULTS INSIDE AND OUT

Clean in passing: Kränzle's manual sweepers ensure that cleanliness is easily maintained in both indoor and outdoor areas - e.g. on paths, driveways or terraces - resulting in clean floor surfaces. Also for commercial use, on farms or in workshops as well as in the craft sector or for cleaning buildings, there are multiple applications for these devices.

### TABLE OF CONTENTS

Colly 800 .....	118-119
Kränzle 1+1 .....	120-121

### KEY INDUSTRIES







## TECHNICAL HIGHLIGHTS



### LONG CLEANING BRISTLES

Outside, the long bristles of smooth-running manual sweepers collect debris such as leaves, litter and other materials in the collection box. Indoors, they thoroughly remove dust and other particles.



### INTEGRATED FREEWHEEL

Thanks to the integrated freewheel, the sweeping roller and side broom will turn sweeping material into the container.



### EASY EMPTYING

The hopper made of impact resistant plastic can be used for emptying easily with the help of a practical handle and on the basis of its well thought-out construction.

# Colly 800



Colly 800 | 50079

## EQUIPMENT

- Integrated free-wheel
- Dustpan principle
- Large waste bin, volume 30 liters
- 2 infinitely height-adjustable side brushes







<b>MODEL</b>	<b>Colly 800</b>
<b>Ord.no.</b>	<b>50079</b>

#### TECHNICAL SPECIFICATIONS

Drive		Manual
Area sweeping capacity at 2.5 km/h	m <sup>2</sup> /h	2000
Waste bin volume	l	30
Exhaust air filter	mm <sup>2</sup>	2 x 6000
Dimensions/standing position	mm	750   400
Working width (with 2 side brushes)	mm	800
Drive wheels Ø	mm	300
Sweeper roller Ø	mm	254
Dimensions L x W x H	mm	980   850   390
Weight	kg	19



# Kränzle 1+1



Kränzle 1+1 | 50077

## EQUIPMENT

- Integrated free-wheel
- Dustpan principle
- large waste bin, volume 30 liters
- 1 infinitely height-adjustable side brush
- Height-adjustable main broom





<b>MODEL</b>	<b>Kränzle 1+1</b>
<b>Ord.no.</b>	<b>50077</b>

#### TECHNICAL SPECIFICATIONS

Drive		Manual
Area sweeping capacity at 2.5 km/h	m <sup>2</sup> /h	1675
Waste bin volume	l	30
Dimensions/standing position	mm	1300   800
Working width (with 1 side brush)	mm	670
Drive wheels Ø	mm	285
Sweeper roller Ø	mm	250
Dimensions L x W x H	mm	1300   800   2060
Weight	kg	24





# NOZZLE TABLE FLOW VOLUME

Nozzle-size	∅	20 / 2	30 / 3	40 / 4	50 / 5	60 / 6	70 / 7	80 / 8	90 / 9	100 / 10	110 / 11	120 / 12	130 / 13	140 / 14	150 / 15
0002 1502 2502	0.91	2.0	2.5	2.8	3.2	3.5	3.7	4.0	4.2	4.5	4.7	4.9	5.1	5.3	5.5
15025 25025	0.98	2.5	3.1	3.6	4.0	4.4	4.8	5.1	5.4	5.7	6.0	6.2	6.5	6.7	7.0
0003 1503 2503 4003	1.09	3.1	3.7	4.3	4.8	5.3	5.7	6.1	6.3	6.8	7.1	7.4	7.7	8.0	8.3
15035 25035	1.15	3.6	4.4	5.0	5.6	6.2	6.7	7.1	7.6	8.0	8.4	8.7	9.1	9.4	9.8
0004 1504 2504 4004	1.19	4.2	5.2	5.9	6.6	7.3	7.8	8.4	8.9	9.4	9.8	10.3	10.7	11.0	11.5
00045 15045 25045 40045	1.27	4.5	5.5	6.4	7.1	7.8	8.4	9.0	9.6	10.2	10.6	11.0	11.4	11.8	12.2
0005 1505 2505 4005	1.35	5.0	6.2	7.1	8.0	8.7	9.4	10.0	10.7	11.3	11.9	12.4	12.9	13.4	13.9
00055 15055 25055 40055	1.4	5.6	6.8	7.8	8.7	9.6	10.3	11.1	11.8	12.4	13.0	13.6	14.2	14.8	15.3
0006 1506 2506 4006	1.47	6.0	7.4	8.6	9.6	10.4	11.3	12.1	12.8	13.6	14.2	14.8	15.4	16.0	16.6
00065 15065 25065 40065	1.52	6.6	8.0	9.3	10.4	11.3	12.3	13.2	14.0	14.7	15.4	16.1	16.8	17.4	18.0
0007 1507 2507 4007	1.6	7.1	8.6	10.0	11.2	12.2	13.2	14.1	15.0	15.3	16.6	17.3	18.0	18.7	19.4
00075 15075 25075 40075	1.65	7.6	9.3	10.7	12.0	13.1	14.2	15.2	16.1	16.9	17.8	18.6	19.3	20.1	20.8
0008 1508 2508 4008	1.7	8.0	9.8	11.3	12.7	14.0	15.1	16.1	17.1	18.0	18.8	19.6	20.4	21.2	22.0
00085 15085 25085 40085	1.75	8.5	10.4	12.1	13.5	14.8	16.0	17.1	18.1	19.1	20.0	20.9	21.8	22.6	23.4
0009 1509 2509 4009	1.8	9.1	11.1	12.8	14.3	15.7	17.0	18.0	19.2	20.2	21.2	22.1	23.0	23.9	24.7
0010 1510 2510 4010	1.9	10.0	12.3	14.2	16.0	17.4	18.9	20.1	21.4	22.5	23.6	24.6	25.6	26.6	27.6
2511	2.6	11.2	13.7	15.9	17.7	19.4	21.0	22.4	23.8	25.1	26.3	27.5	28.6	29.7	30.7
2512	2.16	12.2	15.0	17.3	19.3	21.2	22.9	24.5	25.9	27.4	28.7	30.0	31.2	32.4	33.5

160 / 16	170 / 17	180 / 18	190 / 19	200 / 20	210 / 21	220 / 22	230 / 23	240 / 24	250 / 25	260 / 26	270 / 27	280 / 28	290 / 29	300 / 30	bar / MPa
5.7	5.9	6.0	6.2	6.4	6.6	6.7	6.8	6.9	7.0	7.1	7.3	7.4	7.5	7.6	l/min
7.2	7.4	7.6	7.9	8.1	8.3	8.5	8.6	8.8	9.0	9.2	9.4	9.5	9.7	9.9	l/min
8.6	8.9	9.1	9.3	9.5	9.7	9.9	10.1	10.3	10.5	10.6	11.2	11.4	11.6	11.8	l/min
10.1	10.4	10.7	11.0	11.3	11.6	11.8	12.1	12.4	12.6	12.9	13.1	13.3	13.6	13.8	l/min
11.9	12.2	12.6	12.9	13.3	13.6	13.9	14.2	14.5	14.8	15.1	15.4	15.7	16.0	16.3	l/min
12.6	13.0	13.4	13.8	14.2	14.6	15.0	15.3	15.6	15.9	16.2	16.7	17.1	17.4	17.7	l/min
14.3	14.7	15.1	15.5	15.9	16.3	16.7	17.1	17.5	17.9	18.2	18.6	18.9	19.2	19.6	l/min
15.8	16.3	16.7	17.1	17.5	17.9	18.3	18.7	19.1	19.5	19.9	20.4	20.7	21.1	21.5	l/min
17.1	17.6	18.1	18.6	19.1	19.6	20.1	20.5	20.9	21.3	21.7	22.3	22.7	23.1	23.5	l/min
18.7	19.4	19.9	20.4	20.9	21.4	21.9	22.4	22.9	23.4	23.8	24.1	24.6	25.0	25.5	l/min
20.0	20.6	21.2	21.8	22.4	22.9	23.4	23.9	24.4	24.9	25.4	25.9	26.4	26.8	27.3	l/min
21.5	22.2	22.8	23.4	24.0	24.6	25.2	25.8	26.3	26.8	27.3	27.9	28.4	28.9	29.4	l/min
22.8	23.5	24.2	24.8	25.4	26.0	26.6	27.2	27.8	28.4	29.0	29.5	30.1	30.6	31.1	l/min
24.1	24.9	25.6	26.3	27.0	27.7	28.3	28.9	29.5	30.1	30.7	31.4	31.9	32.5	33.1	l/min
25.5	26.3	27.1	27.8	28.5	29.2	29.9	30.6	31.3	31.9	32.5	33.2	33.8	34.4	35.0	l/min
28.5	29.4	30.2	31.0	31.8	32.6	33.4	34.1	34.9	35.6	36.3	36.9	37.6	38.3	38.9	l/min
31.7	32.7	33.6	34.6	35.5	36.3	37.2	38.0	38.8	39.6	40.4	41.2	42.0	42.7	43.4	l/min
34.6	35.7	36.7	37.7	38.7	39.6	40.6	41.5	42.4	43.2	44.1	44.9	45.8	46.6	47.4	l/min

**Josef Kränzle GmbH & Co. KG**

Rudolf-Diesel-Straße 20  
89257 Illertissen (Germany)

phone: +49 (0) 7303 96 05-0

mail: [sales@kraenzle.com](mailto:sales@kraenzle.com)

[www.kraenzle.com](http://www.kraenzle.com)

 [youtube.com/kraenzleDE](https://www.youtube.com/kraenzleDE)



Presented by your authorized Kränzle partner: