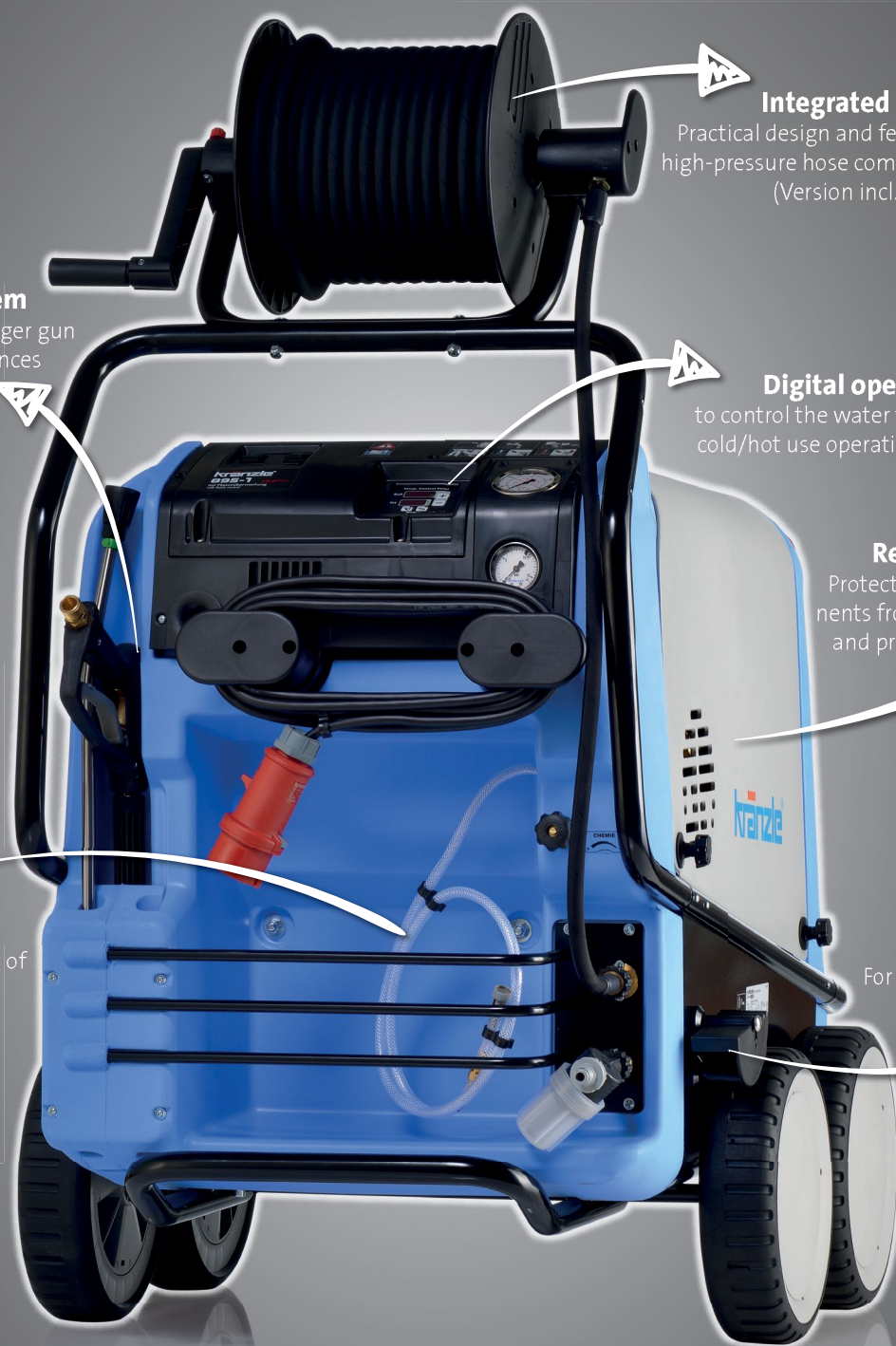


HOT WATER – OIL HEATED
The therm 1-Series

**TOP
SELLER**



Integrated Hose drum
Practical design and features a longer length high-pressure hose complete with folding crank
(Version incl. hose drum)

Neat storage system
Practical stowing of the trigger gun with safety catch and lances

Digital operating panel
to control the water temperature and view cold/hot use operating time management

Removable covers
Protect the mechanical components from environmental factors and provide convenient access

Cleaning Agent Intake
Injector system for dispensing of cleaning agents

Parking brake
For a secure stationary position

Figures: therm 895-1
incl. hose drum





Water output < 1000 l/h

For more models from the therm-1 series, see the next page

| Technical specifications | | therm 635-1 | therm 635-1 | therm 875-1 | therm 875-1 | therm 895-1 | therm 895-1 |
|--|----------------|-------------------|-------------------|--------------------|--------------------|-------------------|-------------------|
| | | without hose drum | incl. hose drum | without hose drum | incl. hose drum | without hose drum | incl. hose drum |
| Operating pressure adjustable | bar / MPa | 30-130 / 3-13 | 30-130 / 3-13 | 30-175 / 3-17.5 | 30-175 / 3-17.5 | 30-195 / 3-19.5 | 30-195 / 3-19.5 |
| Max. admissible overpressure | bar / MPa | 145 / 14.5 | 145 / 14.5 | 190 / 19 | 190 / 19 | 215 / 21.5 | 215 / 21.5 |
| Connected load | V / ~ / Hz / A | 230 / 1 / 50 / 15 | 230 / 1 / 50 / 15 | 400 / 3 / 50 / 8.7 | 400 / 3 / 50 / 8.7 | 400 / 3 / 50 / 12 | 400 / 3 / 50 / 12 |
| Motor speed | Rpm | 1400 | 1400 | 1400 | 1400 | 1400 | 1400 |
| Water output | l/min l/h | 10.6 635 | 10.6 635 | 14.6 875 | 14.6 875 | 14.9 895 | 14.9 895 |
| Power intake / Power output | kW kW | 3.4 2.3 | 3.4 2.3 | 4.8 4.0 | 4.8 4.0 | 7.5 5.5 | 7.5 5.5 |
| Volume water tank | l | 4 | 4 | 4 | 4 | 4 | 4 |
| Hot water output adjustable | °C | 12-89 | 12-89 | 12-87 | 12-87 | 12-86 | 12-86 |
| Steam level | °C | 145 | 145 | 155 | 155 | 155 | 155 |
| Heating output | kW | 55 | 55 | 60 | 60 | 65 | 65 |
| Fuel tank | l | 35 | 35 | 35 | 35 | 35 | 35 |
| Power supply cable | m | 5 | 5 | 7.5 | 7.5 | 7.5 | 7.5 |
| Dimensions L x W x H | mm | 1050 / 800 / 1015 | 1050 / 800 / 1300 | 1050 / 800 / 1015 | 1050 / 800 / 1300 | 1050 / 800 / 1015 | 1050 / 800 / 1300 |
| Weight | kg | 212 | 218 | 212 | 218 | 217 | 223 |
| Cleaning Agent Intake | | ● | ● | ● | ● | ● | ● |
| Equipment | | | | | | | |
| Hose drum | | — | ● | — | ● | — | ● |
| Steel braided high-pressure hose | m | 10 | 20 | 10 | 20 | 10 | 20 |
| Trigger gun with safety catch | Model | Starlet | Starlet | Starlet | Starlet | Starlet | Starlet |
| Stainless steel lance with flat jet nozzle | Nozzle size | ● D25045 | ● D25045 | ● D25045 | ● D25045 | ● D25045 | ● D25045 |

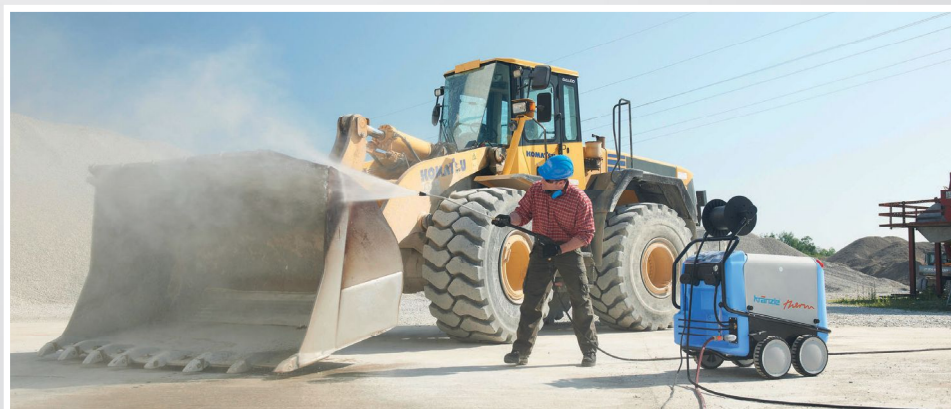
| Ord.no. | 41349 | 413491 | 41342 | 413421 | 41352 | 413521 |
|---------|-------|--------|-------|--------|-------|--------|
|---------|-------|--------|-------|--------|-------|--------|

TECHNICAL HIGHLIGHTS!

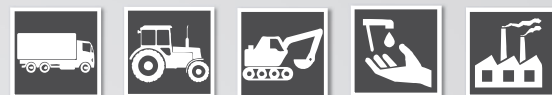
DIGITAL THERMOSTAT

The high-pressure cleaners of the therm-1-series are fitted with a digital thermostat which combines a variety of advantages in operation and service.

- Intelligent system analysis
- Reduction of fuel costs thanks to object-specific temperature specification
- Simple reading of the operating hours



For detailed technical information, see page 86-87



Water output > 1000 l/h

For more models from the therm-1 series, see the previous page

| | | therm 1165-1 | | therm 1165-1 | | therm 1525-1 | | therm 1525-1 | |
|--|----------------|-------------------|------|-------------------|------|-------------------|------|-------------------|------|
| Technical specifications | | without hose drum | | incl. hose drum | | without hose drum | | incl. hose drum | |
| Operating pressure adjustable | bar / MPa | 30-165 / 3-16.5 | | 30-165 / 3-16.5 | | 30-125 / 3-12.5 | | 30-125 / 3-12.5 | |
| Max. admissible overpressure | bar / MPa | 180 / 18 | | 180 / 18 | | 140 / 14 | | 140 / 14 | |
| Connected load | V / ~ / Hz / A | 400 / 3 / 50 / 12 | | 400 / 3 / 50 / 12 | | 400 / 3 / 50 / 12 | | 400 / 3 / 50 / 12 | |
| Motor speed | Rpm | 1400 | | 1400 | | 1400 | | 1400 | |
| Water output | l/min l/h | 19.4 | 1165 | 19.4 | 1165 | 25 | 1500 | 25 | 1500 |
| Power intake / Power output | kW kW | 6.4 | 5.0 | 6.4 | 5.0 | 7.5 | 5.5 | 7.5 | 5.5 |
| Volume water tank | l | 4 | | 4 | | 4 | | 4 | |
| Hot water output adjustable | °C | 12-82 | | 12-82 | | 12-65 | | 12-65 | |
| Steam level | °C | 155 | | 155 | | 140 | | 140 | |
| Heating output | kW | 78 | | 78 | | 84 | | 84 | |
| Fuel tank | l | 35 | | 35 | | 35 | | 35 | |
| Power supply cable | m | 7.5 | | 7.5 | | 7.5 | | 7.5 | |
| Dimensions L x W x H | mm | 1050 / 800 / 1015 | | 1050 / 800 / 1300 | | 1050 / 800 / 1015 | | 1050 / 800 / 1300 | |
| Weight | kg | 217 | | 223 | | 222 | | 228 | |
| Cleaning Agent Intake | | ● | | ● | | ● | | ● | |
| Equipment | | | | | | | | | |
| Hose drum | | - | | ● | | - | | ● | |
| Steel braided high-pressure hose | m | 10 | | 20 | | 10 | | 20 | |
| Trigger gun with safety catch | Model | Starlet | | Starlet | | Starlet | | Starlet | |
| Stainless steel lance with flat jet nozzle | Nozzle size | ● D2507 | | ● D2507 | | ● M20125 | | ● M20125 | |

| Ord.no. | 41353 | 413531 | 41348 | 413481 |
|---------|-------|--------|-------|--------|
|---------|-------|--------|-------|--------|



Fig. Non-marking version (NoM). Info on page 58

For detailed technical information, see page 87